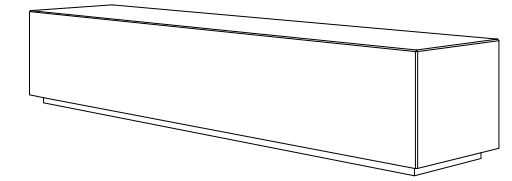


CARACTERISTICAS / FEATURES

Material hormigón Petra 1
Acabado decapado e hidrofugado
Dimensiones l. 240, a. 50, h. 45 cm
Color ver carta de colores
Fijación apoyado por su propio peso
Peso 904 Kg
Palet 250 x 55 cm

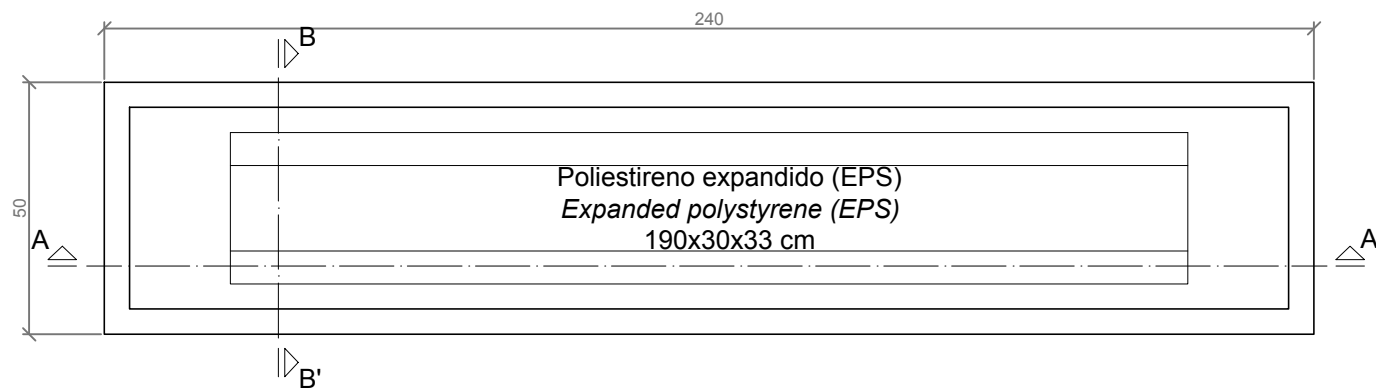
Material precast concrete Petra 1
Finish scaled and waterproofed
Dimensions l.240, w.50, h. 45 cm
Colour see colour catalogue
Fixing resting on the ground
Weight 904Kg
Pallet 250 x 55 cm

dineñador / design: magourban

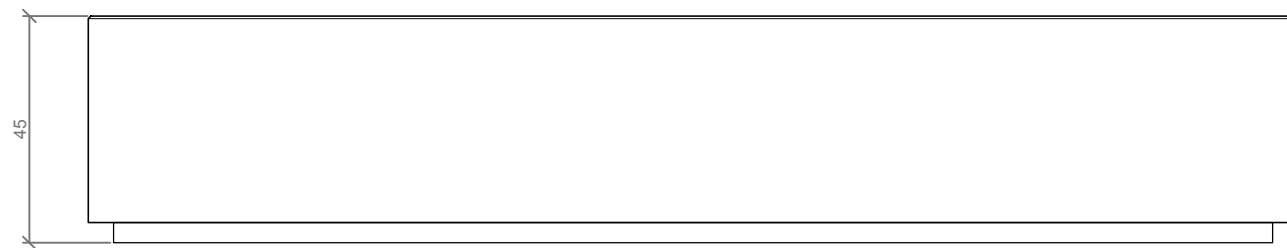


DYNAMIC I-240

GEOMETRIA / GEOMETRY

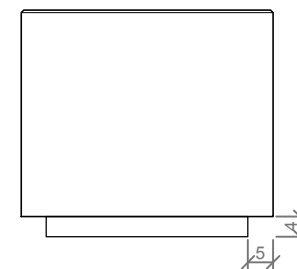


VISTA INFERIOR / BOTTOM VIEW



ALZADO / FRONT VIEW

Todos los bordes chaflan 0.5x45°
 All edges chamfer 0,5x45°

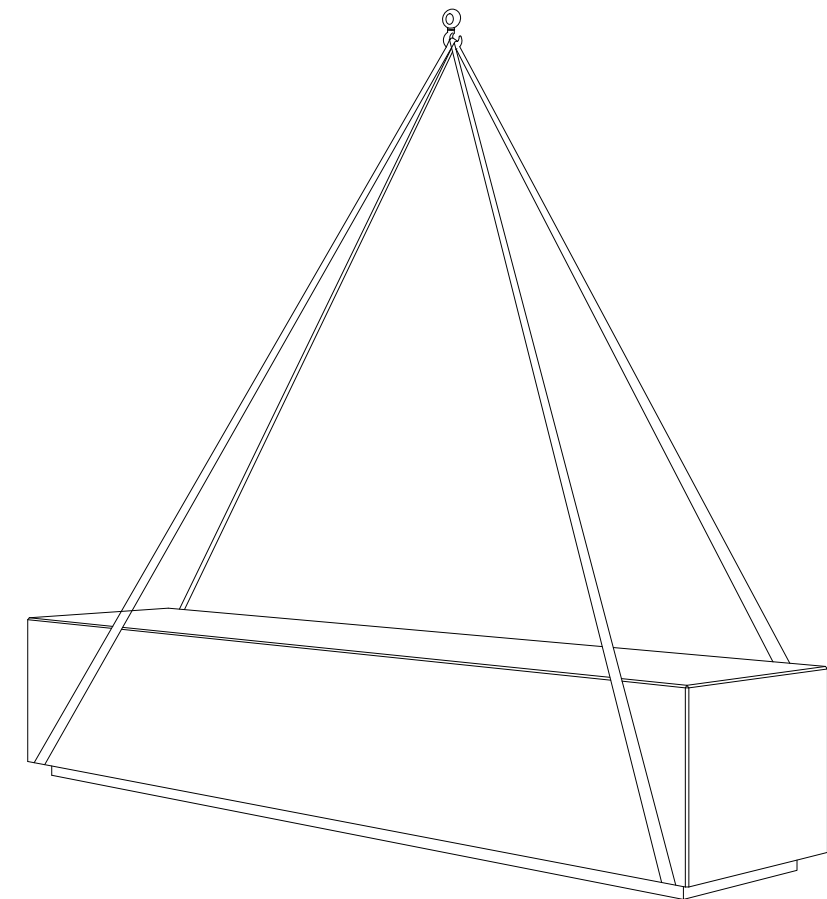


PERFIL / PROFIL VIEW

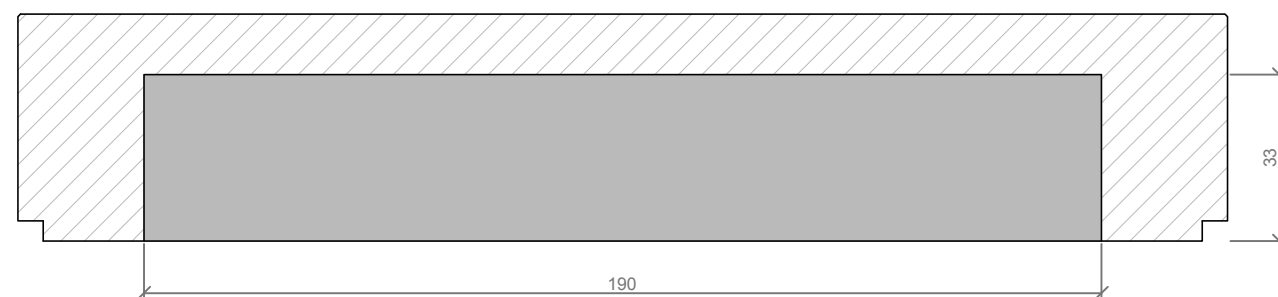
ESC: 1/15

MANIPULACIÓN E INSTALACIÓN / HANDLING AND INSTALLATION

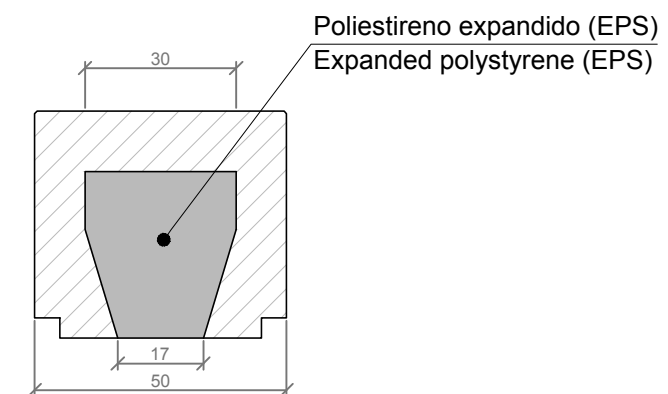
elevación / hoisting
 P= 904 Kg



ESPECIFICACIONES / SPECIFICATIONS



SECCIÓN A-A' / SECTION A-A'



SECCIÓN B-B' / SECTION B-B'

ESC: 1/15