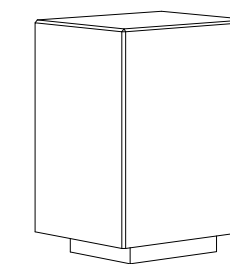


**CARACTERISTICAS / FEATURES**

**Material** hormigón Petra 1  
**Acabado** decapado e hidrofugado  
**Dimensiones** l. 30, a. 30, h. 45 cm  
**Color** ver carta de colores  
**Fijación** apoyado por su propio peso  
**Peso** 110 Kg  
**Palet** 70 x 70 cm (4 unidades)

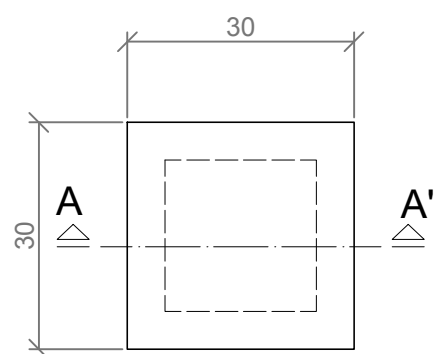
**Material** precast concrete Petra 1  
**Finish** scaled and waterproofed  
**Dimensions** l.30, w.30, h. 45 cm  
**Colour** see colour catalogue  
**Fixing** resting on the ground  
**Weight** 110 Kg  
**Pallet** 70 x 70 cm (4 units)

diseñador / design: magourban

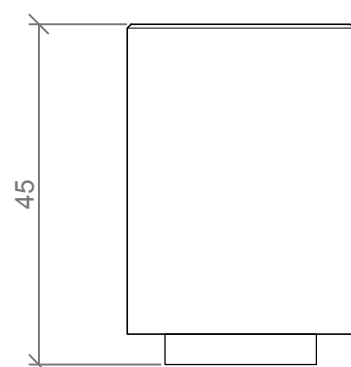


**DYNAMIC Q-30**

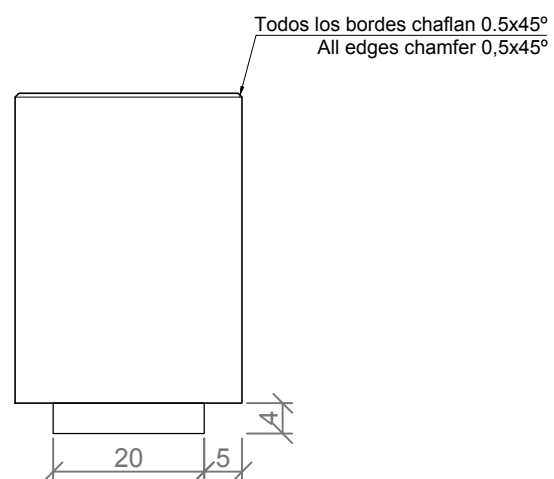
**GEOMETRIA / GEOMETRY**



PLANTA / TOP VIEW



ALZADO / FRONT VIEW



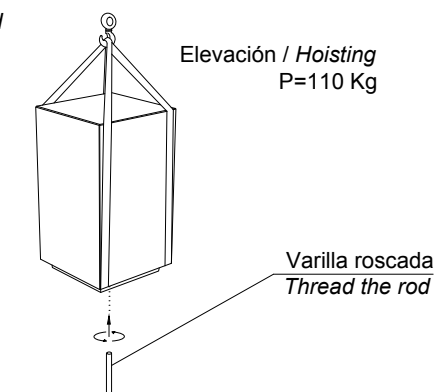
PERFIL / PROFILE VIEW

Todos los bordes chaflan 0.5x45°  
 All edges chamfer 0,5x45°

ESC: 1/10

**MANIPULACIÓN E INSTALACIÓN / HANDLING AND INSTALLATION**

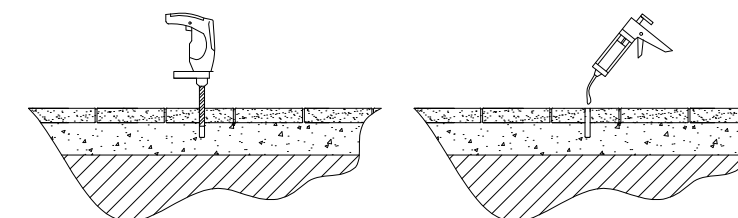
1 Enroscar la varilla / Thread the rod



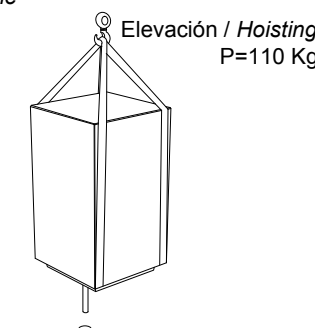
Elevación / Hoisting  
 P=110 Kg

Varilla roscada  
 Thread the rod

2 Perforar agujero y verter resina epoxy dentro / Drill hole and pour resin epoxy inside hole

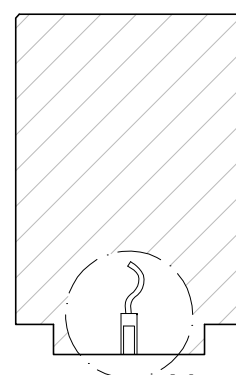


3 Insertar varilla roscada en agujero  
 Insert metal threaded rod in hole

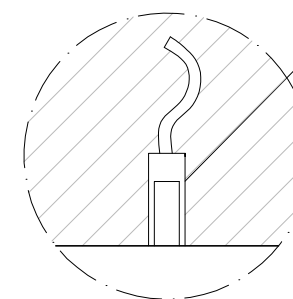


Elevación / Hoisting  
 P=110 Kg

**ESPECIFICACIONES / SPECIFICATIONS**



SECCIÓN A-A' / SECTION A-A'



Casquillo M12 - Tubo acero zincado alta precisión  
 Tube M12 - Galvanized steel pipe high precision

DETALLE N / DETAIL N

ESC: 1/10