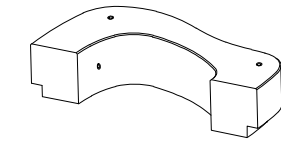


CARACTERÍSTICAS / FEATURES

Material hormigón petra 1
Acabado decapado e hidrofugado
Dimensiones l. 159, a. 80, h. 45 cm.
Color ver carta de colores
Fijación simplemente apoyado o mediante resina epoxy
Peso 685 Kg
Bulto 159 x 80 x 60 cm
Peso bulto 700 Kg

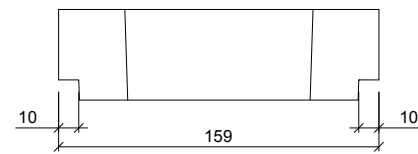
Material precast concrete petra 1
Finish scaled and waterproofed
Dimensions l. 159, w. 80, h. 45 cm
Colour see colour catalogue
Fixing resting on the ground or anchored with epoxy resin
Weight 685 Kg
Package 159 x 80 x 60 cm
Weight package 700 Kg

diseñador / design: Roger Alberó

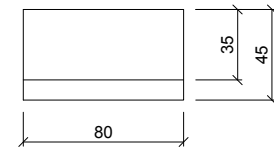


GEOMETRIA / GEOMETRY

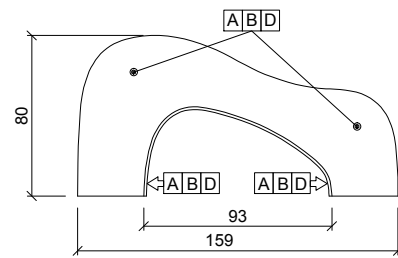
0 10 20 30 40 50
CM



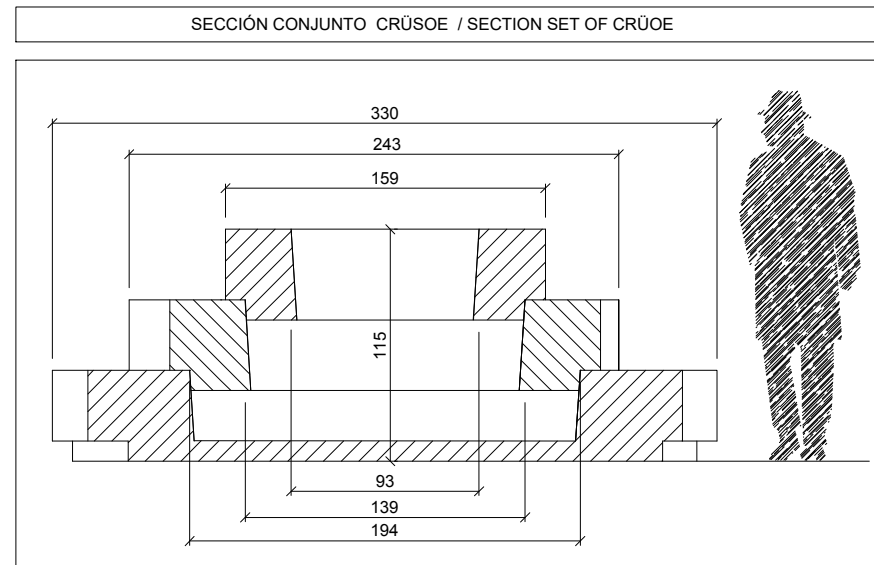
ALZADO / FRONT VIEW



PERFIL / PROFIL VIEW



PLANTA / TOP VIEW

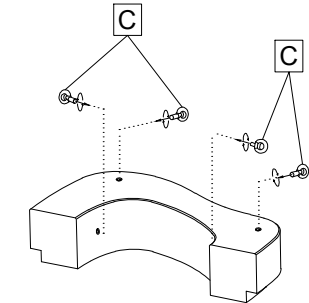
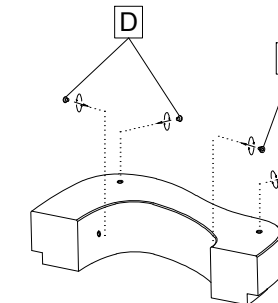


SECCIÓN CONJUNTO CRÜOE / SECTION SET OF CRÜOE

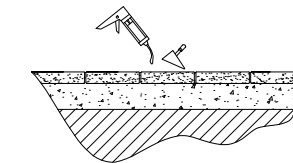
↑ ubicación del casquillo roscado
location of steel socket threaded

MANIPULACIÓN E INSTALACIÓN / HANDLING AND INSTALLATION

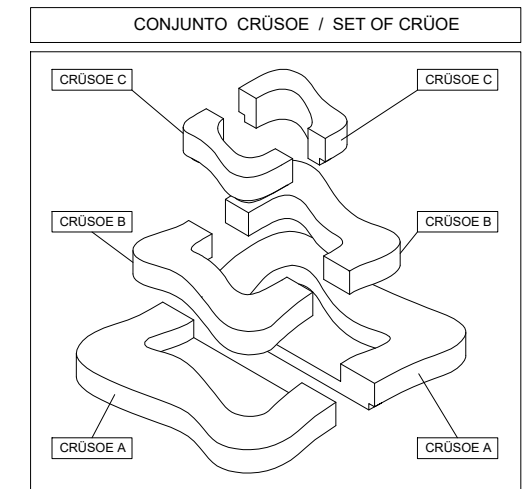
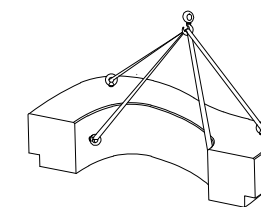
- 1 extraer tapa / extract stopper
- 2 enroscar cáncamo / thread the eyebolt



- 3 verter resina epoxy / pour resin epoxy



- 4 elevar e instalar / lift and install



se suministra instrucciones de montaje para el conjunto crüoe
instructions assembly are supplied for montage set of Crusoe

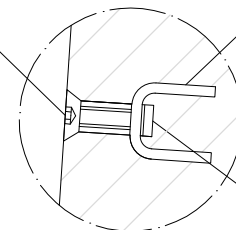
ESPECIFICACIONES / SPECIFICATIONS



SECCIÓN / SECTION

D Tornillo avellanado M16
Countersunk screw M16

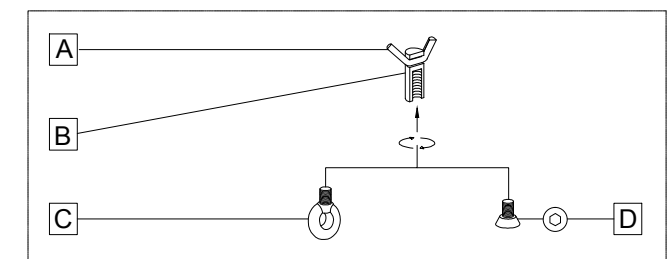
A Barra corrugada acero negro Ø10
Corrugated rod black steel Ø10



DETALLE M / DETAIL M

B Casquillo M16 - Tubo acero zincado alta precisión
Galvanized steel threaded sleeve M16 high precision

SISTEMA DE ELECCIÓN / LIFTING SYSTEM



- | | | | |
|---|-----------------------------------|---|-------------------|
| A | barra corrugada / corrugated rod | C | cáncamo / eyebolt |
| B | casquillo roscado / thread sleeve | D | tapa / stopper |