

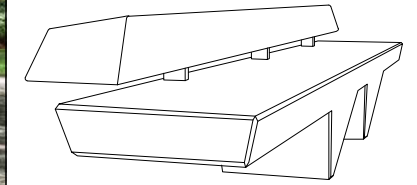
CARACTERÍSTICAS / FEATURES



Material hormigón Petra 1 + GRC imitación madera
Acabado decapado e hidrofugado
Dimensiones l. 240, a. 75, h. 70 cm
Color ver carta de colores
Fijación apoyado por su propio peso o mediante resina epoxy
Peso 920 Kg
Palet 250 x 85 cm

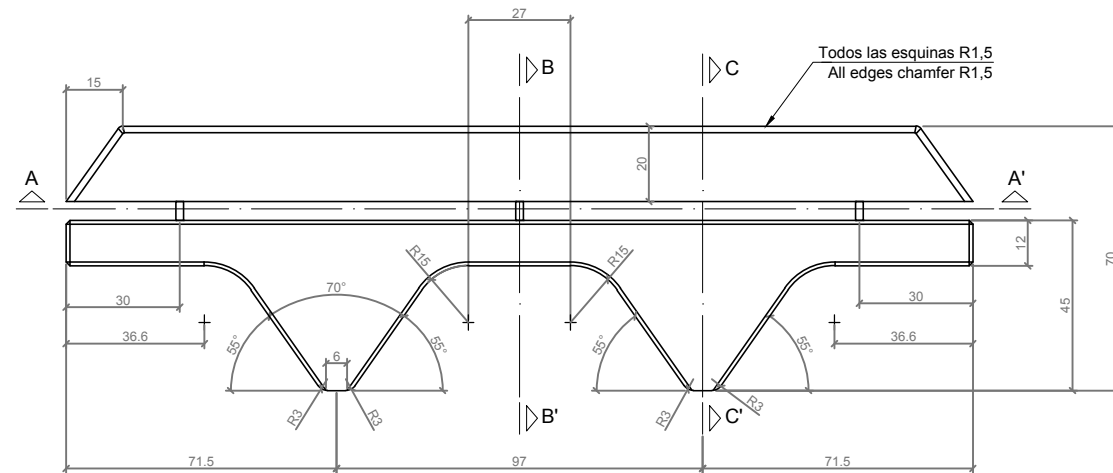
Material precast concrete Petra 1 + GRC wood imitation
Finish etched and waterproofed
Dimensions l. 240, w. 75, h. 70 cm
Colour see colour catalogue
Fixing resting on the ground or with epoxy resin
Weight 920 Kg
Pallet 250 x 85 cm

diseñador / design: In-Tenta



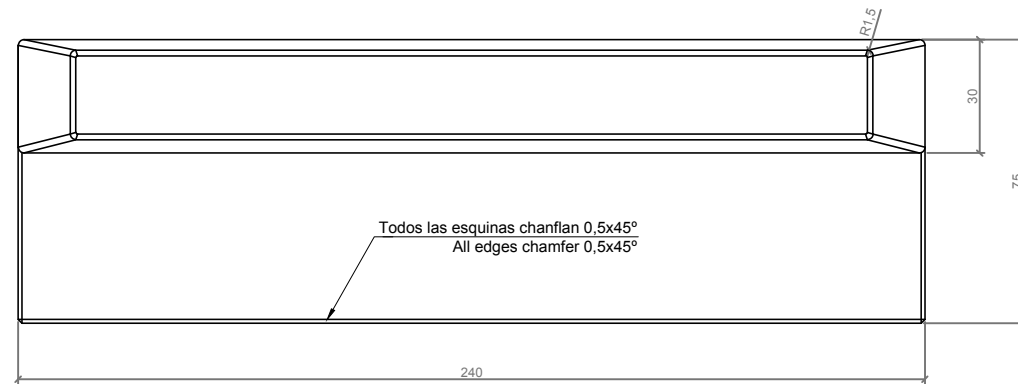
RIPPLE BR-240

GEOMETRIA / GEOMETRY



ALZADO / FRONT VIEW

PERFIL / RIGHT SIDE

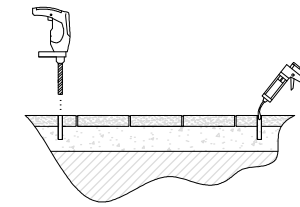


PLANTA / TOP VIEW

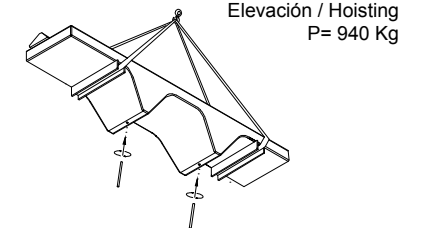
ESC. 1:20

MANIPULACIÓN E INSTALACIÓN / HANDLING AND INSTALLATION

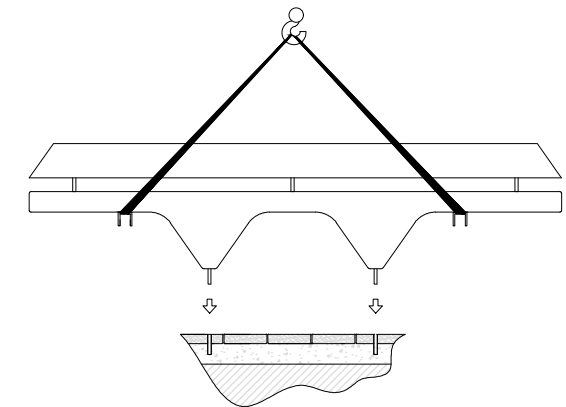
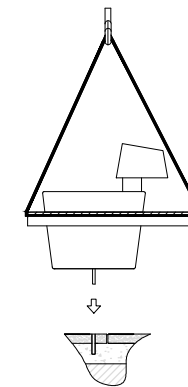
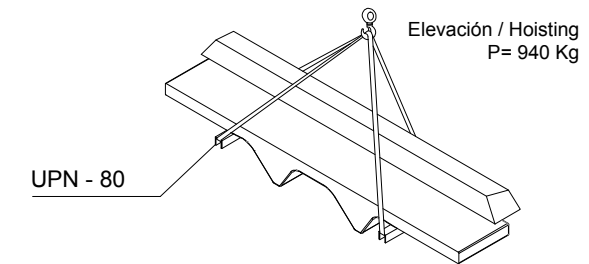
- 1 Perforar agujeros y verter resina epoxy
 drill holes and pour resin epoxy



- 2 Elevar y enroscar las varillas
 lift and thread the rods



- 3 Para la manipulación e instalación utilizar la viga UPN80, como se muestra en la imagen
 For the manipulation and installation use the beam UPN-80 as portrayed in the picture.



ESPECIFICACIONES / SPECIFICATIONS

