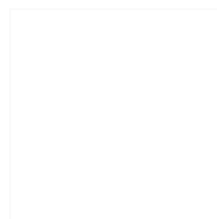
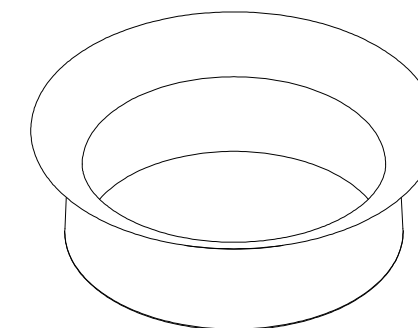


CARACTERÍSTICAS / FEATURES



Material hormigón Petra 1
Acabado decapado e hidrofugado
Dimensiones Ø 220, h. 74 cm
Color ver carta de colores
Fijación apoyado por su propio peso
Peso 1.200 Kg, 1.018 L
Palet 230 x 230 cm

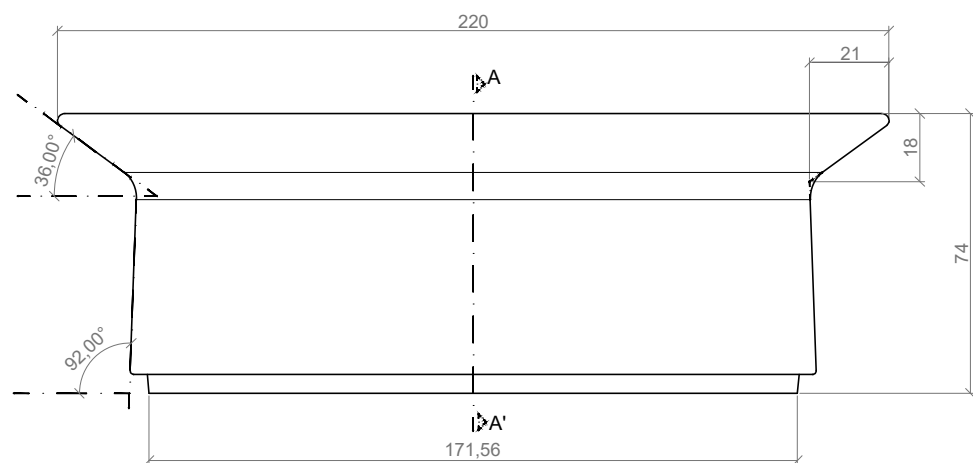
Material precast concrete Petra 1
Finish scaled and waterproofed
Dimensions Ø 220, h. 74 cm
Colour see colour catalogue
Fixing resting on the ground
Weight 1.200 Kg, 1.018 L
Pallet 230 x 230 cm



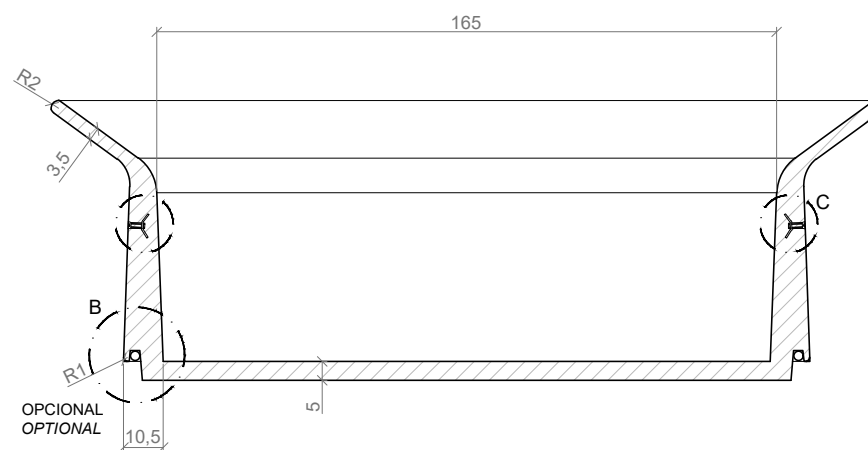
diseñador / design: magourban

HAT J-220

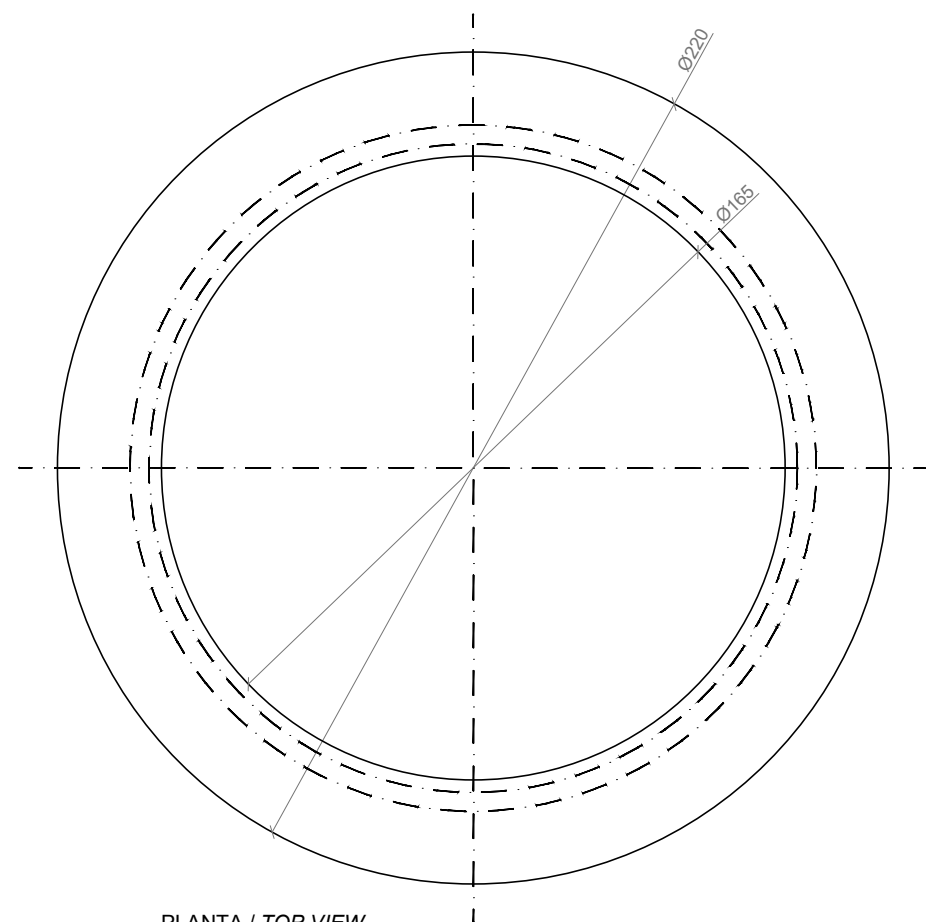
GEOMETRIA / GEOMETRY



ALZADO / FRONT VIEW



SECCIÓN A-A' / SECTION A-A'

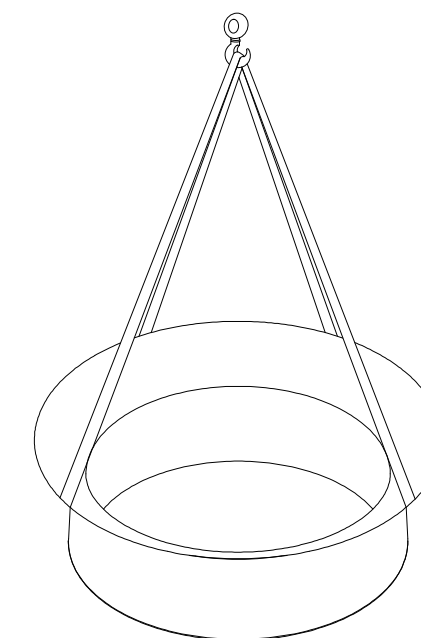


PLANTA / TOP VIEW

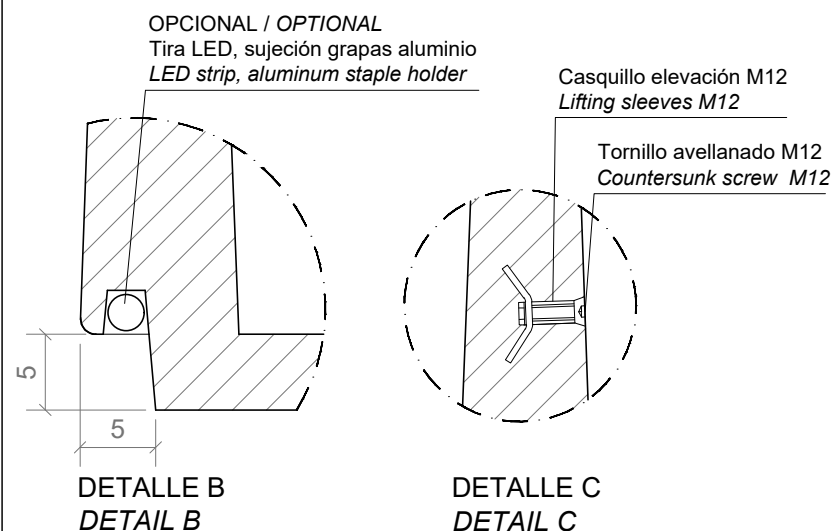
ESC. 1:20

MANIPULACIÓN E INSTALACIÓN
HANDLING AND INSTALLATION

Elevación / Hoisting
P= 1.200 Kg



ESPECIFICACIONES / SPECIFICATIONS



ESC. 1:5