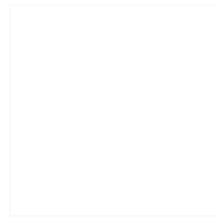


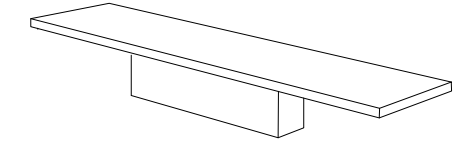
CARACTERISTICAS / FEATURES



Material hormigón Petra 1
Acabado decapado e hidrofugado
Dimensiones l. 300, a. 80, h. 46 cm
Color ver carta de colores
Fijación por su propio peso o mediante resina epoxi
Peso 850 kg = 450 Kg + 400 kg
Palet 310 x 90 cm

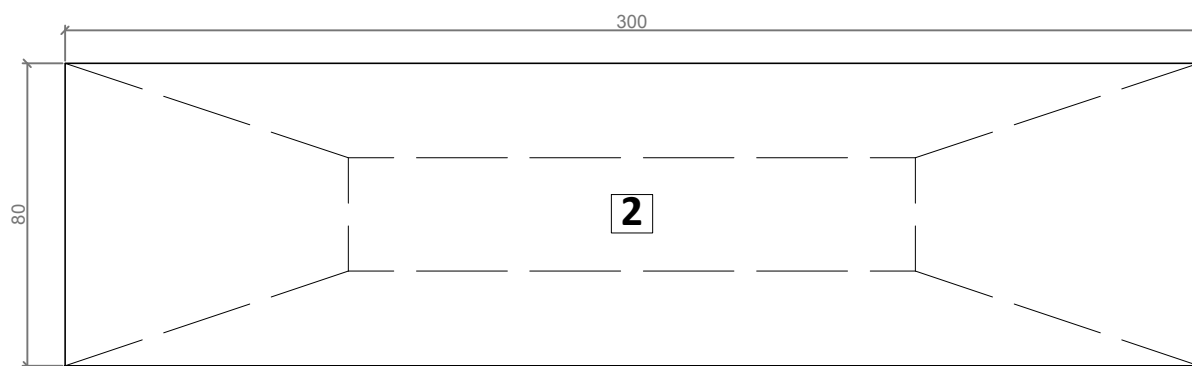
Material precast concrete Petra 1
Finish scaled and waterproofed
Dimensions l. 300, w. 80, h. 46 cm
Colour see colour catalogue
Fixing resting on the ground or with epoxy resin
Weight 850 Kg = 450 kg + 400 kg
Pallet 310 x 90 cm

dineñador / design: magourban

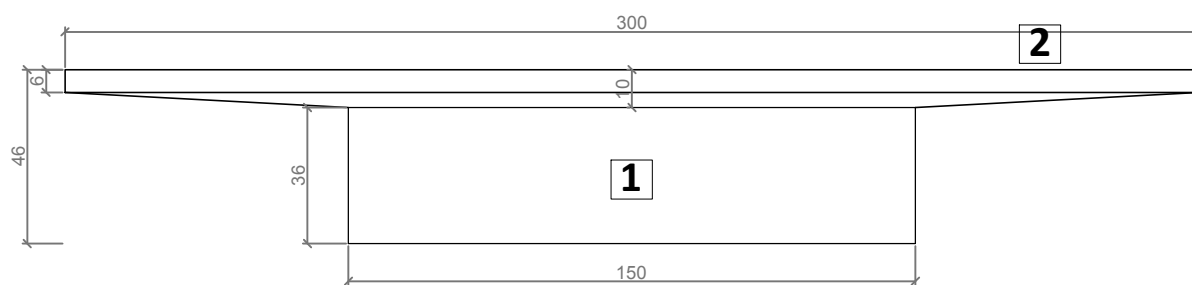


BUS

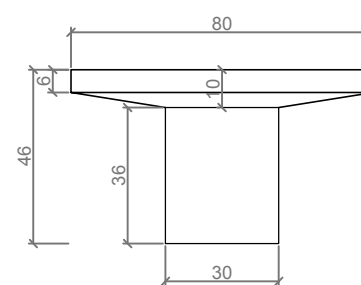
GEOMETRIA / GEOMETRY



PLANTA / TOP VIEW



ALZADO / FRONT VIEW



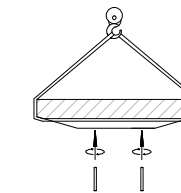
PERFIL / PROFILE VIEW

- 1 Acabado abujardado / Brush, rubbed finish
- 2 Acabado decapado / Scaled finish

ESC. 1:20

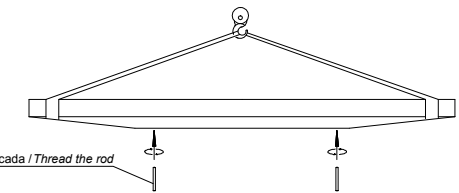
MANIPULACIÓN E INSTALACIÓN / HANDLING AND INSTALLATION

- 1 Enroskar la varilla / Thread the rod

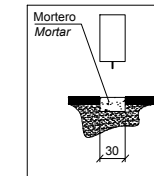
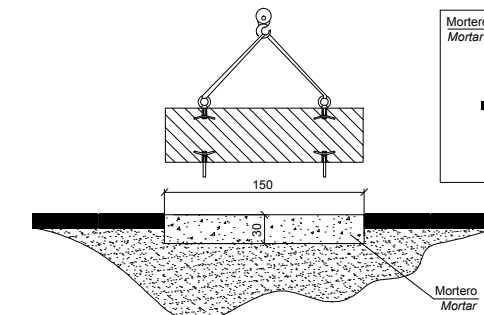


Varilla roscada / Thread the rod

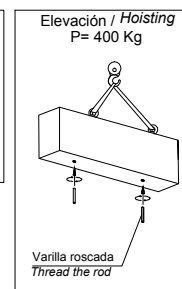
Elevación / Hoisting
P= 450 Kg



- 2 Realizar encofrado [150x30x30] cm, verter mortero, roscar varilla e instalar el soporte.
 Perform formworking [150x30x30] cm, pour mortar, threaded the rod and install support.

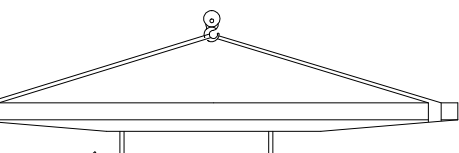
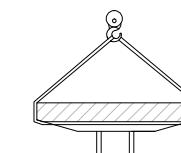


Mortero
Mortar



Elevación / Hoisting
P= 400 Kg
Varilla roscada
Thread the rod

- 3 Verter resina epoxy e insertar la varilla en el agujero.
 Pour resin epoxy and insert metal rod in hole.

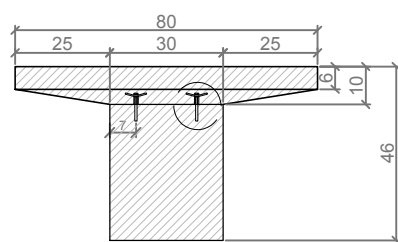


Elevación / Hoisting
P= 450 Kg

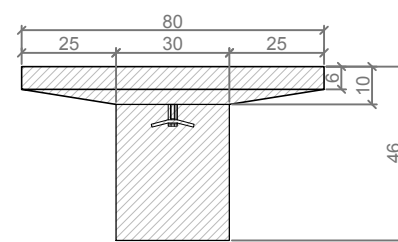
Epoxy

Se envía desmontado / Sent disassembled

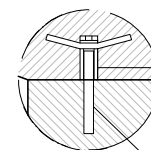
ESPECIFICACIONES / SPECIFICATIONS



SECCIÓN A-A' / SECTION A-A'



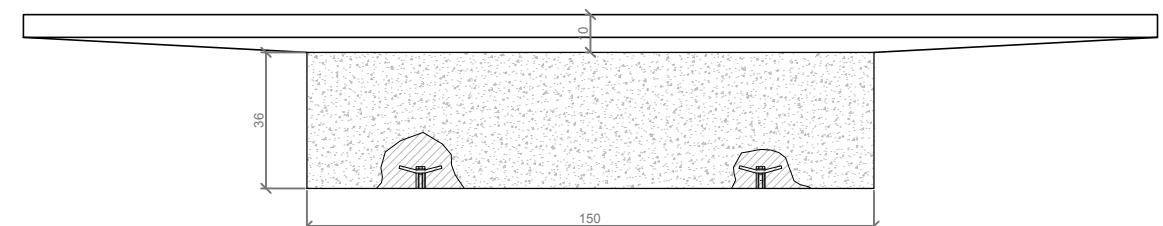
SECCIÓN B-B' / SECTION B-B'



Casquillo M12 - Tubo acero zincado alta precisión
 Tube M12 - Galvanized steel pipe high precision

Opcional - Barra M12 acero zincado alta precisión
 Optional - Rod M12 galvanized steel high precision

DETALLE / DETAIL



SECCIÓN LONGITUDINAL / LONGITUDINAL SECTION

ESC. 1:20