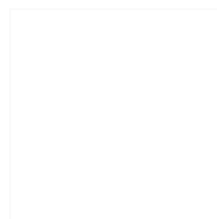


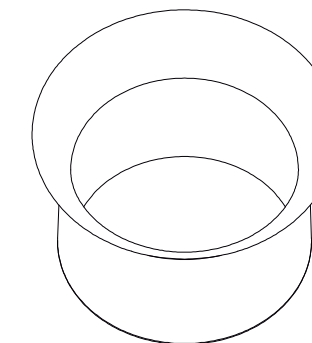
CARACTERÍSTICAS / FEATURES



Material hormigón Petra 1
Acabado decapado e hidrofugado
Dimensiones Ø 115, h. 74 cm
Color ver carta de colores
Fijación apoyado por su propio peso
Peso 472 Kg, 532 L
Palet 125 x 125 cm

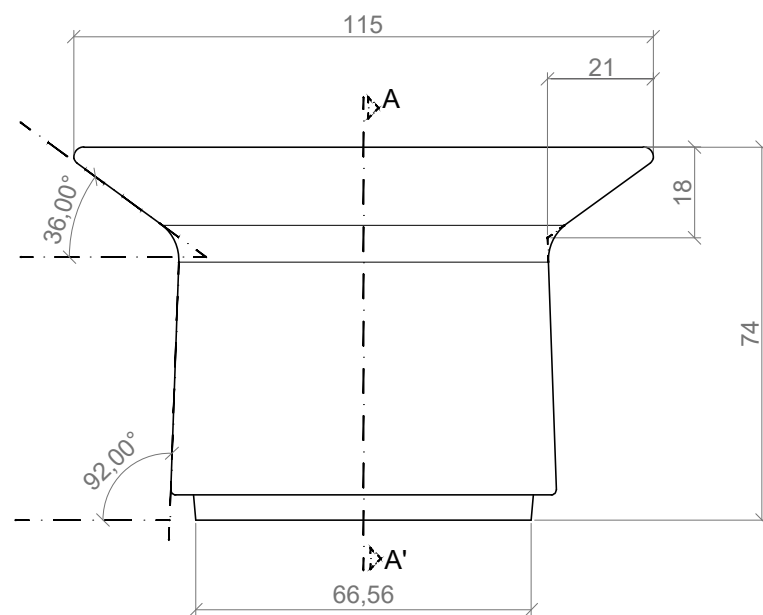
Material precast concrete Petra 1
Finish scaled and waterproofed
Dimensions Ø 115, h. 74 cm
Colour see colour catalogue
Fixing resting on the ground
Weight 472 Kg, 532 L
Pallet 125 x 125 cm

diseñador / design: magourban

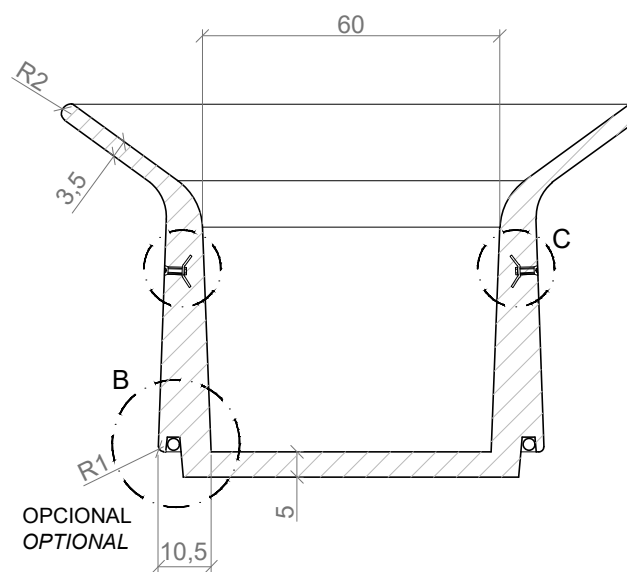


HAT J-115

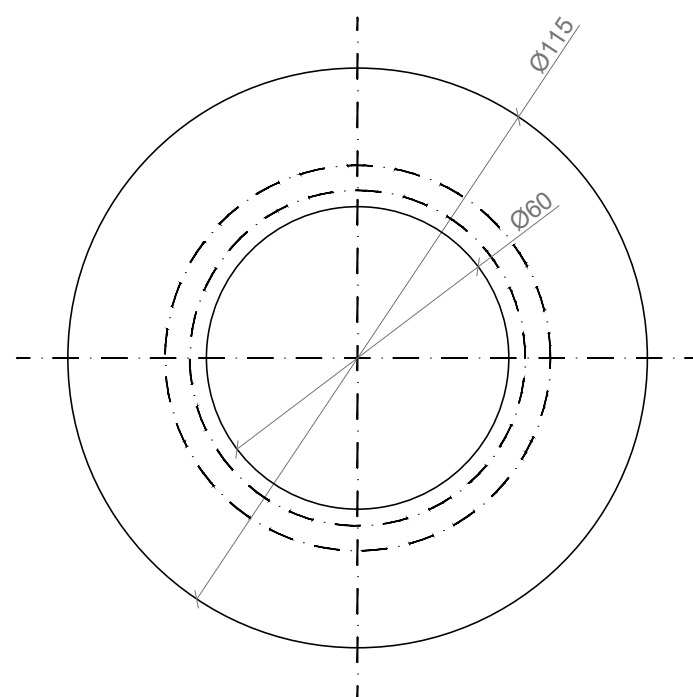
GEOMETRIA / GEOMETRY



ALZADO / FRONT VIEW



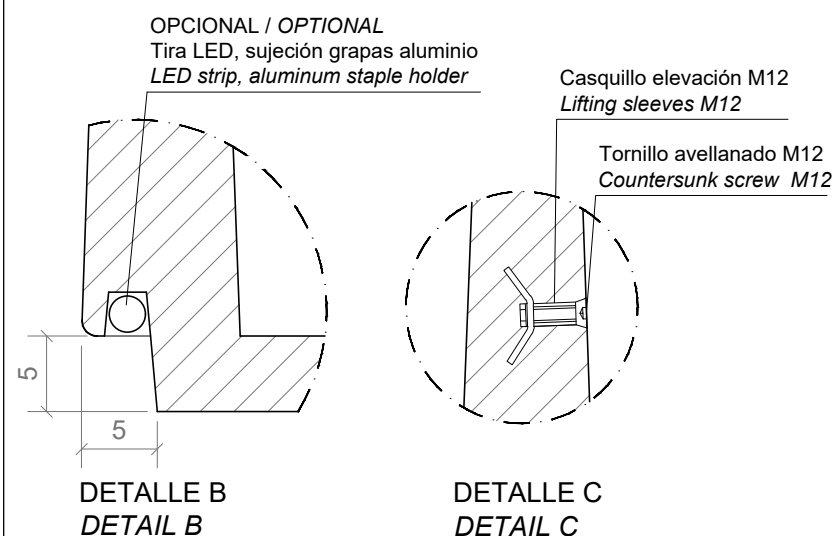
SECCIÓN A-A' / SECTION A-A'



PLANTA / TOP VIEW

ESC. 1:15

ESPECIFICACIONES / SPECIFICATIONS



ESC. 1:5

MANIPULACIÓN E INSTALACIÓN / HANDLING AND INSTALLATION

Elevación / Hoisting
 P= 472 Kg

