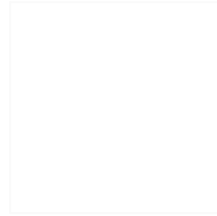
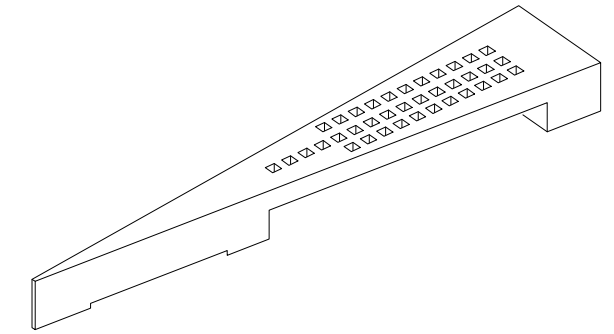


CARACTERÍSTICAS / FEATURES



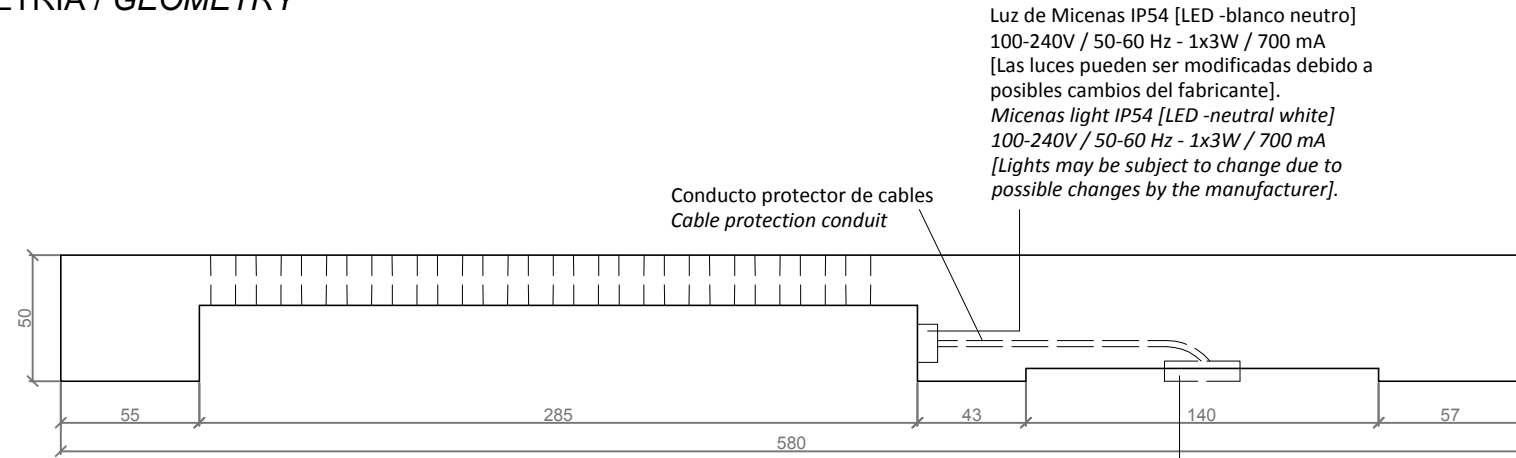
Material hormigón Petra 1
Acabado decapado e hidrofugado
Dimensiones l. 580, a. 110, h. 50 cm
Color ver carta de colores
Fijación apoyado por su propio peso
Peso 2100 Kg

Material precast concrete Petra 1
Finish scaled and waterproofed
Dimensions l. 580, w. 110, h. 50 cm
Colour see colour catalogue
Fixing resting on the ground
Weight 2100 Kg



GANT LIGHT

GEOMETRIA / GEOMETRY

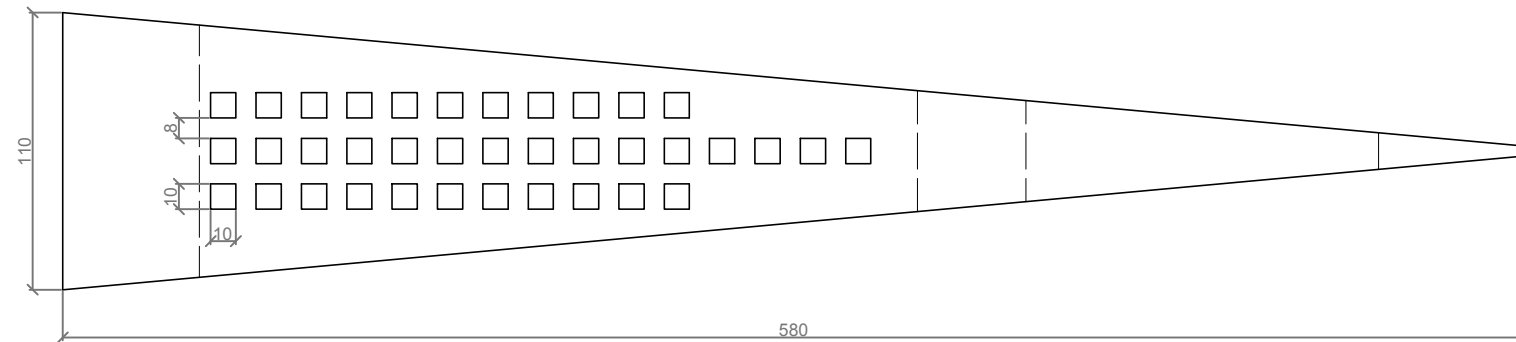


ALZADO / FRONT VIEW

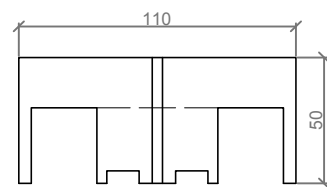
Luz de Miconas IP54 [LED -blanco neutro]
 100-240V / 50-60 Hz - 1x3W / 700 mA
 [Las luces pueden ser modificadas debido a posibles cambios del fabricante].
 Miconas light IP54 [LED -neutral white]
 100-240V / 50-60 Hz - 1x3W / 700 mA
 [Lights may be subject to change due to possible changes by the manufacturer].

Conducto protector de cables
 Cable protection conduit

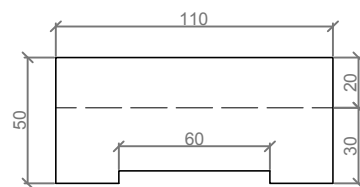
Espacio reservado para la conexión eléctrica
 Space reserved for electrical connection



PLANTA / TOP VIEW



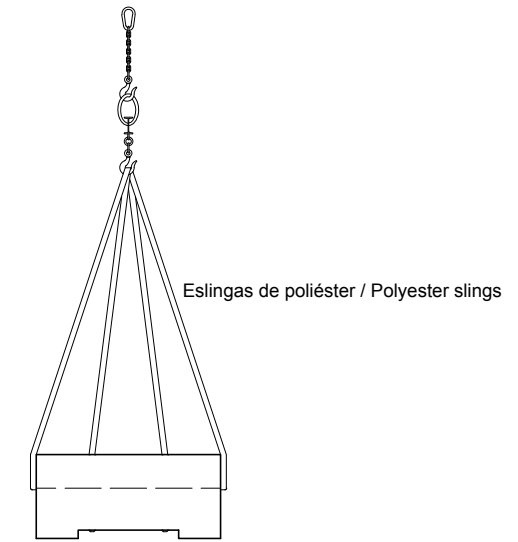
ALZADO DERECHO / RIGHT VIEW



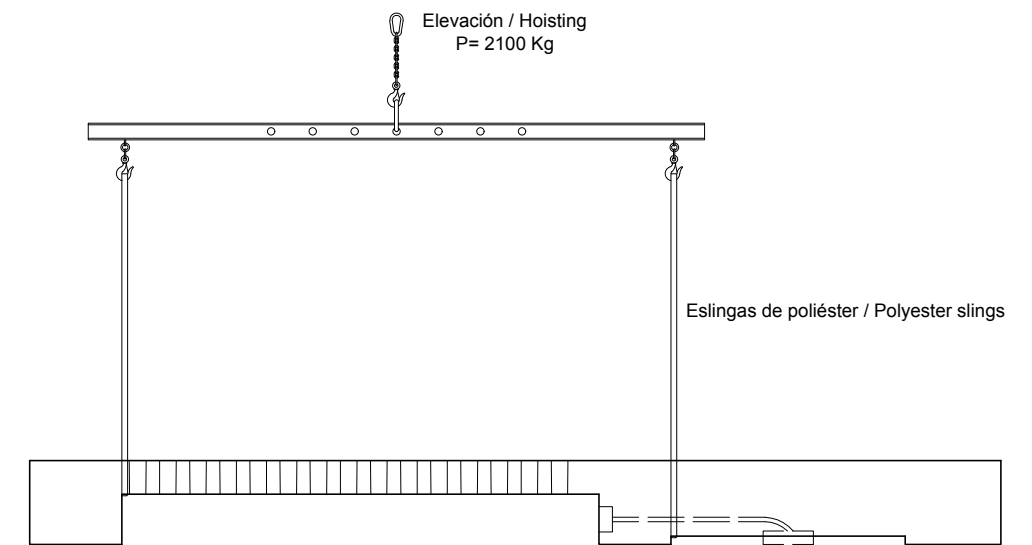
ALZADO IZQUIERDO / LEFT VIEW

ESC. 1:30

MANIPULACIÓN E INSTALACIÓN / HANDLING AND INSTALLATION



Eslingas de poliéster / Polyester slings



Elevación / Hoisting
 P= 2100 Kg

Eslingas de poliéster / Polyester slings

Tàrrega, Lleida - Tel. +34 973 15 87 03 - www.magourban.com - info@magourban.com

magourban

