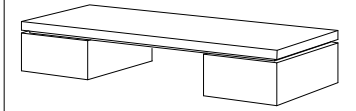


## CARACTERÍSTICAS / FEATURES

**Material** hormigón Petra 1  
**Acabado** decapado e hidrofugado  
**Dimensiones** l. 200, a. 60, h. 45 cm  
**Color** ver carta de colores  
**Fijación** simplemente apoyado o mediante resina epoxi  
**Peso** 670 Kg = 200 kg + 235 kg + 235 kg  
**Palet** 210 x 70 x 60 cm  
**Peso palet** 750 Kg

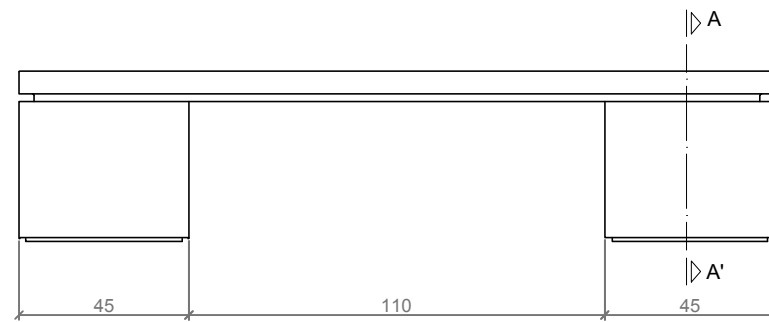
**Material** precast concrete Petra 1  
**Finish** scaled and waterproofed  
**Dimensions** l.200, w.60, h. 45 cm  
**Colour** see colour catalogue  
**Fixing** resting on the ground or with epoxy resin  
**Weight** 670 Kg = 200 kg + 235 kg + 235 kg  
**Pallet** 210 x 70 x 60 cm  
**Weight pallet** 750 Kg

diseñador / design: I+D magourban

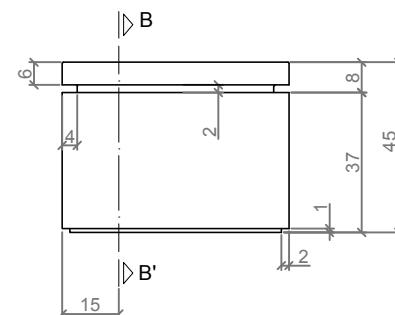


**MANYANET 200**

## GEOMETRIA / GEOMETRY



ALZADO / FRONT VIEW



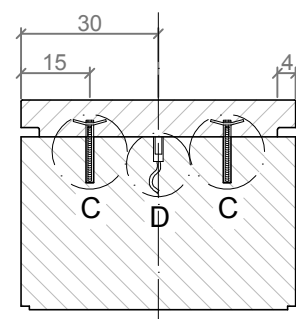
PERFIL / PROFILE VIEW



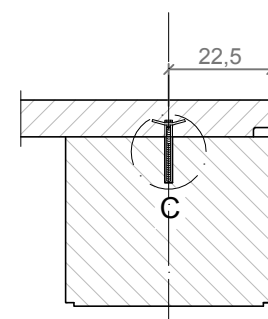
PLANTA / TOP VIEW

ESC. 1/ 20

## ESPECIFICACIONES / SPECIFICATIONS



SECCIÓN A-A' / SECTION A-A'



SECCIÓN B-B' / SECTION B-B'

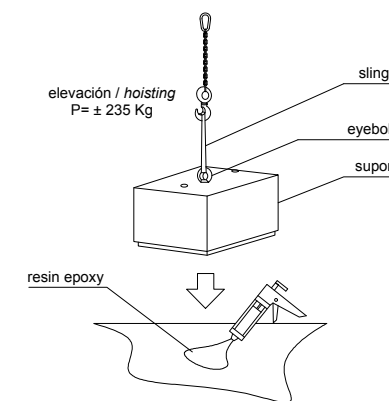
**Detalle C**  
**Detail C**  
 Casquillo roscado M12  
 Threaded sleeve M12

**Detalle D**  
**Detail D**  
 Varilla roscada M12  
 Threaded rod M12

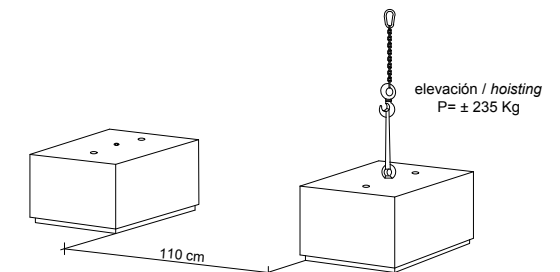
**Detalle D**  
**Detail D**  
 Casquillo roscado M16  
 Threaded sleeve M16

## MANIPULACIÓN E INSTALACIÓN / HANDLING AND INSTALLATION

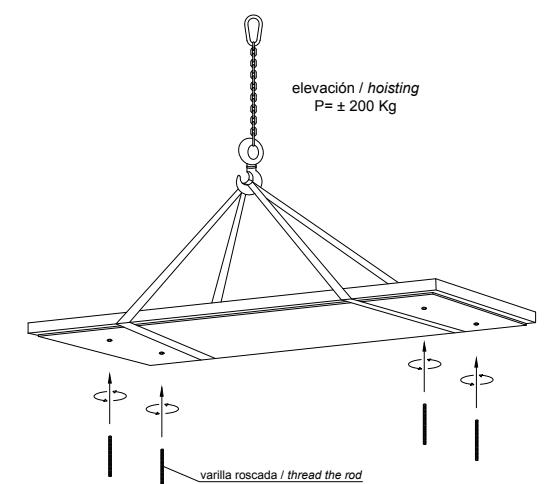
- 1** Enroscar el cáncamo al soporte, elevar mediante eslingas y fijar mediante resina epoxy  
**Screw the eyebolt to the support, lift it by slings and fixe it with epoxy resin**



- 2** Marcar la distancia de 110 cm entre ambos soportes. Enroscar el cáncamo al soporte 2, elevar mediante eslingas y fijar mediante resina epoxy. Comprobar la distancia.  
**Mark the distance of 110 cm between the two supports. Screw the eyebolt to the support 2, lift it by slings and fixe it with epoxy resin. Check the distance.**



- 3** Elevar mediante eslingas la losa asiento y enroscar las varillas  
**Lifting with slings the seat slab and thread the rods**



- 6** Verter resina epoxy e insertar las varillas en los agujeros de los soportes  
**Pour resin epoxy insert metal rods in holes of the brackets**

