

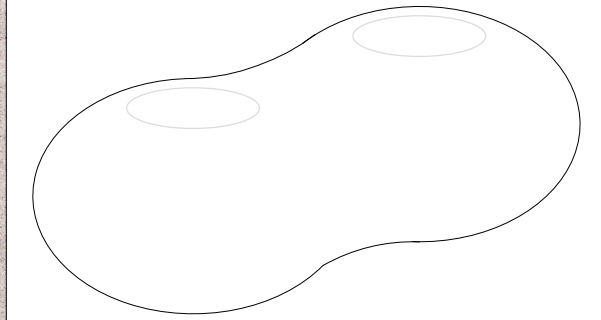
CARACTERISTICAS / FEATURES



**Material** hormigón Petra 1  
**Acabado** decapado e hidrofugado  
**Dimensiones** l. 130, a. 65, h. 41 cm  
**Color** ver carta de colores  
**Fijación** apoyado por su propio peso  
 (OPCIONAL: con varillas metálicas)  
**Peso** 530 kg  
**Palet** 135 x 70 cm (1 unidad, no remontable)

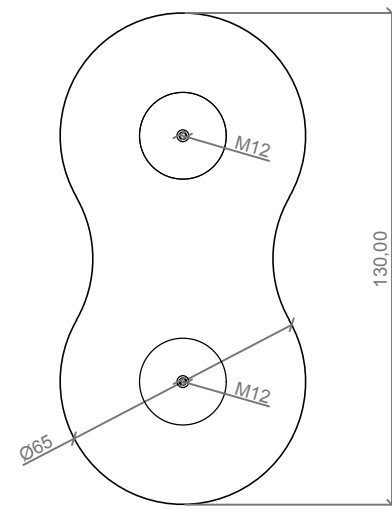
**Material** precast concrete Petra 1  
**Finish** scaled and waterproofed  
**Dimensions** l. 130, w. 65, h. 41 cm  
**Colour** see colour catalogue  
**Fixing** resting on the ground  
 (OPTIONAL: with metal rods)  
**Weight** 530 kg  
**Pallet** 135 x 70 cm (1 unit, no stackable)

diseñador / design: magourban

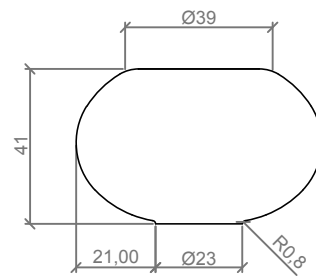


ZEN DUO

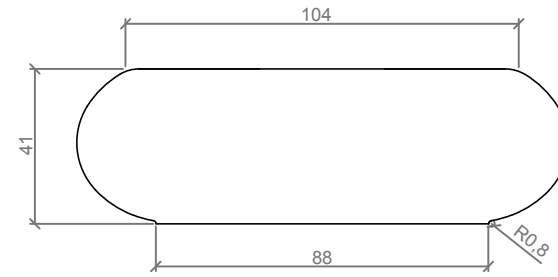
GEOMETRIA / GEOMETRY



VISTA INFERIOR / BOTTOM VIEW



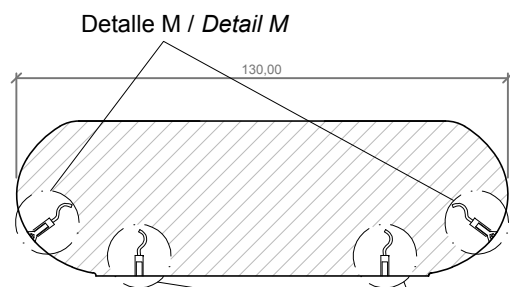
ALZADO / FRONT VIEW



PERFIL / RIGHT SIDE

ESCALA / SCALE : 1/20

ESPECIFICACIONES / SPECIFICATIONS



SECCION / SECTION

OPCIONAL / OPTIONAL  
 Detalle N / Detail N

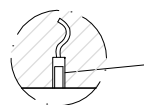
DETALLE M / DETAIL M  
 Casquillo elevación / Lifting sleeve



Casquillo M12 - Acero zincado alta precisión  
 Threaded sleeve M12 - Galvanized steel high precision

Tornillo avellanado M12 - Inox  
 Countersunk screw M12 - Inox

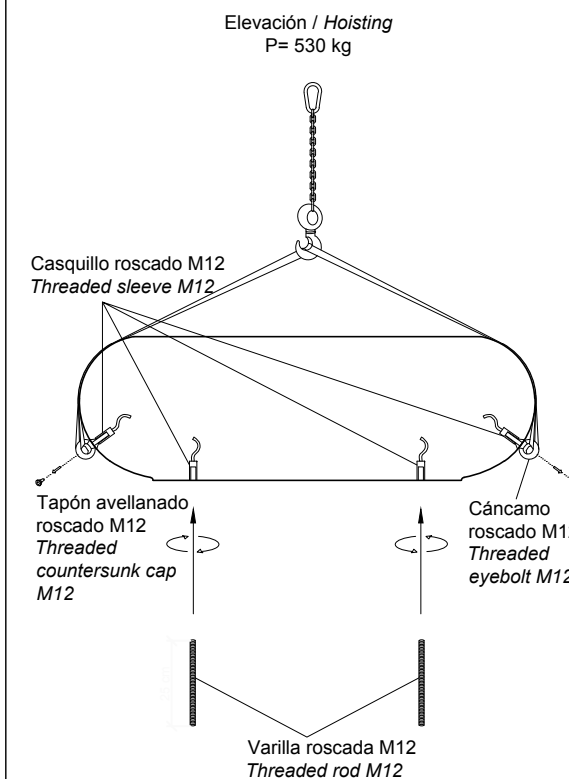
OPCIONAL / OPTIONAL  
 DETALLE N / DETAIL N  
 Casquillo fijación / Fixing sleeve



Casquillo M12 - Acero zincado alta precisión  
 Threaded sleeve M12 - Galvanized steel high precision

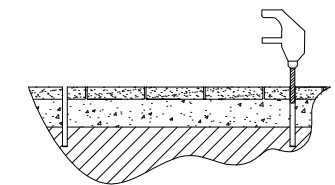
MANIPULACION E INSTALACION / HANDLING AND INSTALLATION

- 1 Extraer tapones, enroscar cáncamos para elevación y (OPCIONAL) enroscar varillas inferiores  
 Extract stoppers, thread eyebolts and (OPTIONAL) thread the lower rods

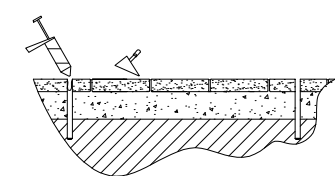


OPCIONAL / OPTIONAL

- 2 Perforar agujeros de Ø1,4 cm  
 Drill holes of Ø1.4 cm



- 3 Verter resina epoxi / Pour epoxy resin



- 4 Insertar las varillas M12 en los agujeros  
 Insert metal rods M12 in holes

