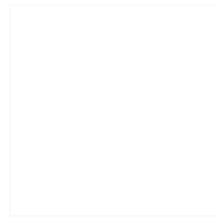


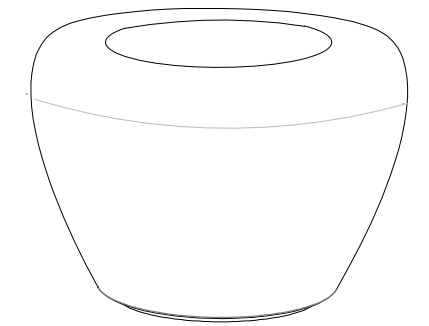
## CARACTERÍSTICAS / FEATURES



**Material** hormigón Petra 1  
**Acabado** decapado e hidrofugado  
**Dimensiones** l. Ø100, h. 70 cm  
**Color** ver carta de colores  
**Fijación** por su propio peso o mediante varilla metálica  
**Peso** 650 Kg / 146 L  
**Palet** 110 x 110 cm

**Material** precast concrete Petra 1  
**Finish** scaled and waterproofed  
**Dimensions** l. Ø100, h. 70 cm  
**Colour** see colour catalogue  
**Fixing** resting on the ground or with metal rod  
**Weight** 650 Kg / 146 L  
**Pallet** 110 x 110 cm

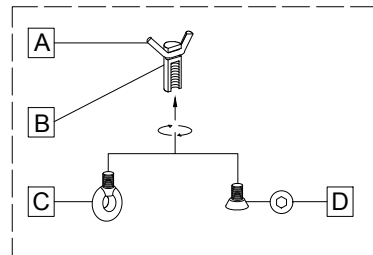
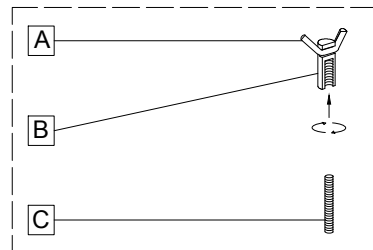
diseñador / design: Stimulo



CANTORODADO-100

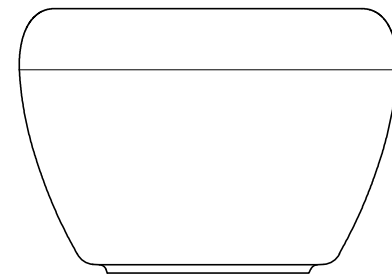
## GEOMETRIA / GEOMETRY

### SISTEMA DE FIJACIÓN / ANCHORAGE SYSTEM

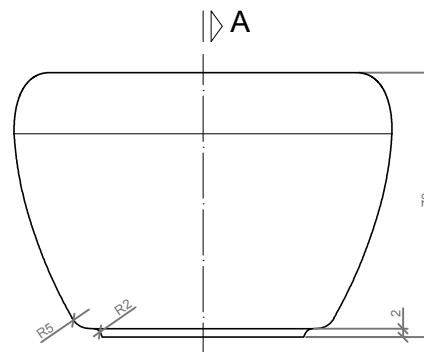


### SISTEMA DE ELEVACIÓN / LIFTING SYSTEM

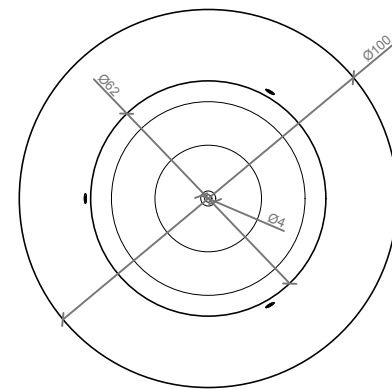
- A barra corrugada / corrugated rod
- B casquillo roscado / thread sleeve
- C cáncamo / eyebolt
- D tapa / stopper
- E varilla roscada / thread the rod



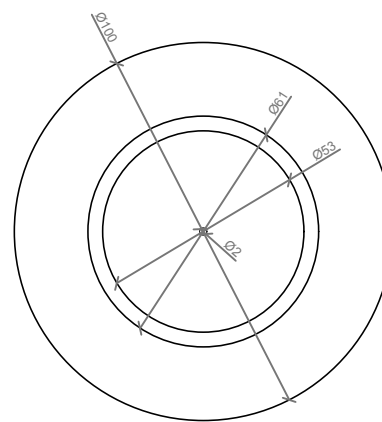
ALZADO / FRONT VIEW



ALZADO / FRONT VIEW

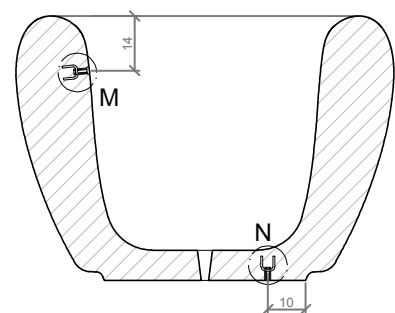


PLANTA / TOP VIEW

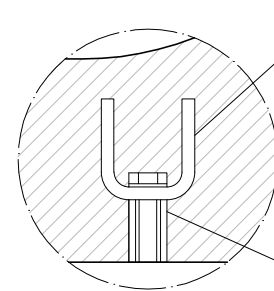


VISTA INFERIOR / BOTTOM VIEW

## ESPECIFICACIONES / SPECIFICATIONS



SECCIÓN A-A' / SECTION A-A'



DETALLE N / DETAIL N

Tornillo avellanado M12  
 Countersunk screw M12

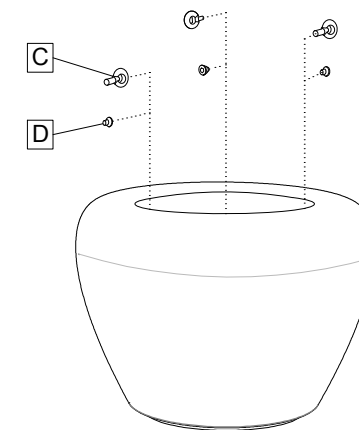
A Barra corrugada acero negro Ø6  
 Corrugated rod black steel Ø6

B Casquillo M12 de acero zincado  
 Galvanized steel threaded sleeve M12

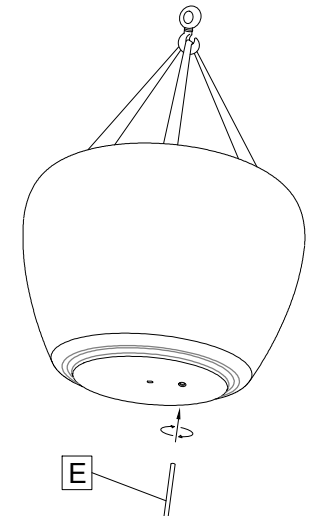
DETALLE M / DETAIL M

## MANIPULACIÓN E INSTALACIÓN / HANDLING AND INSTALLATION

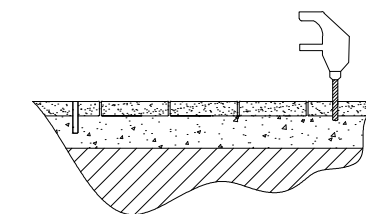
- 1 Extraer tapas y enroscar cáncamo  
 Extract stoppers & thread the eyebolt



- 2 Elevar y enroscar la varilla  
 Raise and screw the rod



- 3 Perforar y verter resina epoxy  
 Drill and pour epoxy resin



- 4 Insertar la varilla en el agujero  
 Insert the metal rod in the hole

