

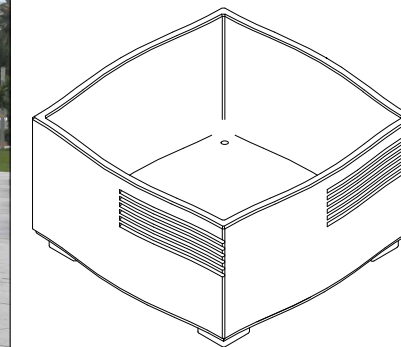
CARACTERÍSTICAS / FEATURES



Material hormigón Petra 1
Acabado decapado e hidrofugado
Dimensiones l. 162, a. 162, h. 89 cm
Color ver carta de colores
Fijación apoyado por su propio peso
Peso 1560 Kg / 1570 L
Palet 180 x 180 cm

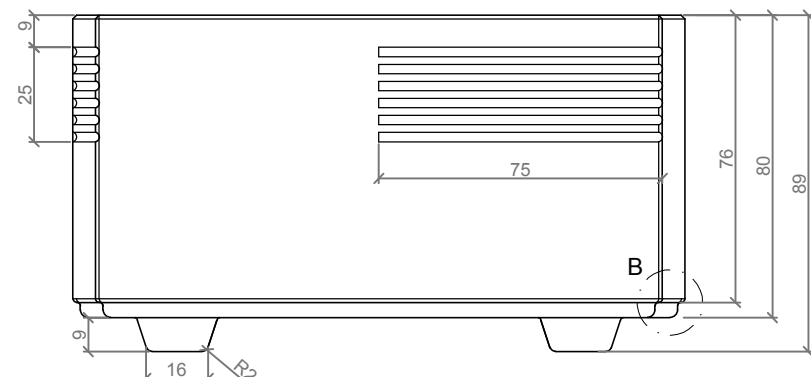
Material precast concrete Petra 1
Finish etched and waterproofed
Dimensions l. 162, w. 162, h. 89 cm
Colour see colour catalogue
Fixing resting on the ground
Weight 1560 Kg / 1570 L
Pallet 180 x 180 cm

diseñador / design: Ton Riera

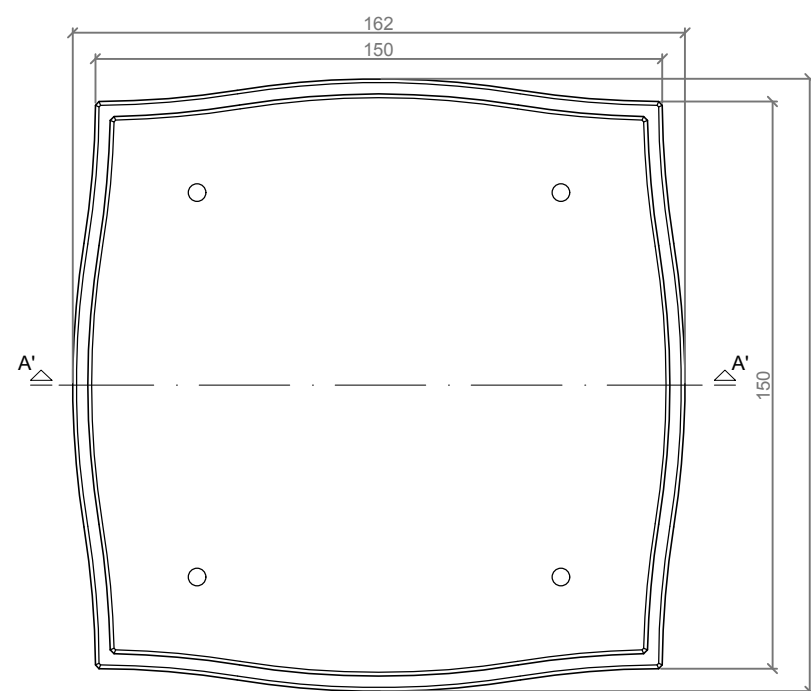


FUAT Q-80P

GEOMETRIA / GEOMETRY



VISTA INFERIOR / BOTTOM VIEW

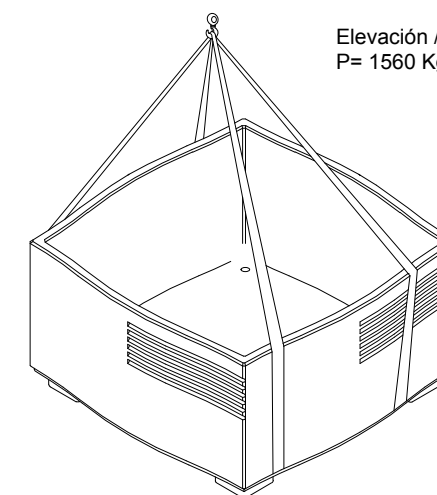


ALZADO / FRONT VIEW

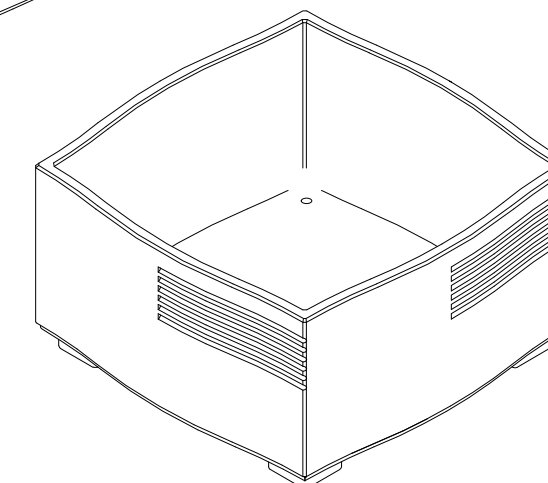
ESC. 1:20

MANIPULACIÓN E INSTALACIÓN / HANDLING AND INSTALLATION

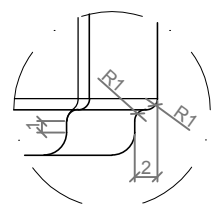
- 1 Enroscar cáncamo, fijar eslingas e instalar / Thread the eyebolt, fixing slings and install.



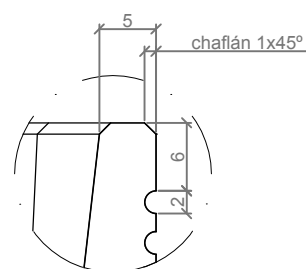
Elevación / Hoisting
 P= 1560 Kg



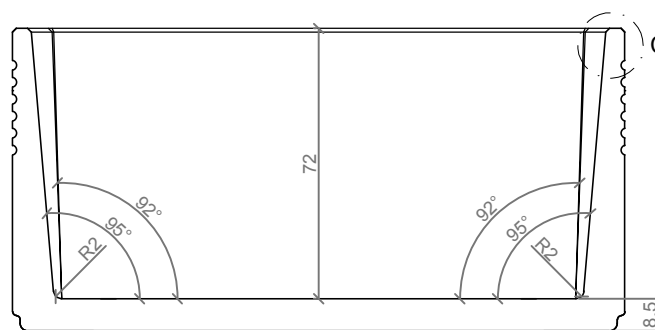
ESPECIFICACIONES / SPECIFICATIONS



DETALLE B-B' / DETAIL B-B'



DETALLE C-C' / DETALLE C-C'



SECCIÓN A-A' / SECTION A-A'