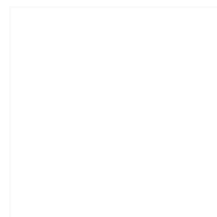
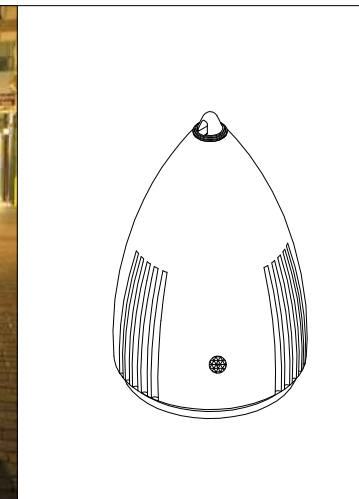


CARACTERISTICAS / FEATURES



Material hormigón Petra 2 + hierro imprimación antioxidante + retroreflectantes
Acabado decapado e hidrofugado
Dimensiones Ø 68, h. 110 cm
Color ver carta de colores
Fijación apoyado por su propio peso o mediante resina epoxi
Peso 497 Kg
Palet 70 x 70 cm

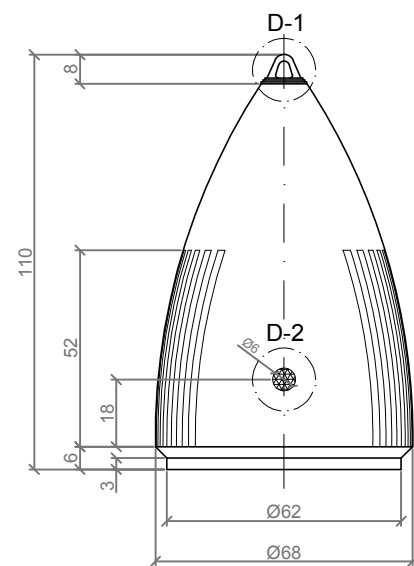
Material precast concrete Petra 2 + iron with rust-resistant primer + retroreflective
Finish scaled and waterproofed
Dimensions Ø 68, h. 110 cm
Colour see colour catalogue
Fixing resting on the ground or with epoxy resin
Weight 497 Kg
Pallet 70 x 70 cm



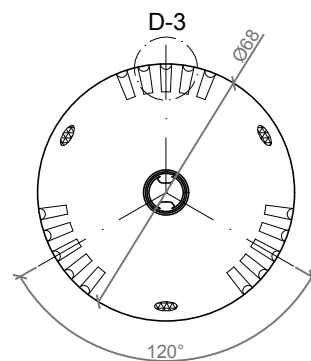
dineñador / design: Ton Riera

RODAS

GEOMETRIA / GEOMETRY

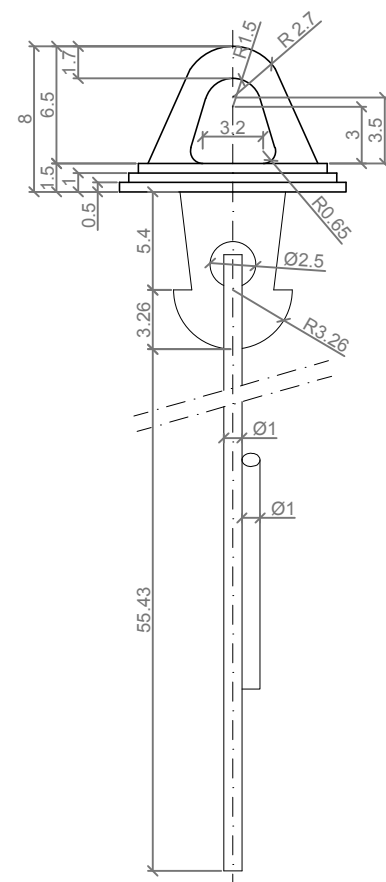


ALZADO / FRONT VIEW

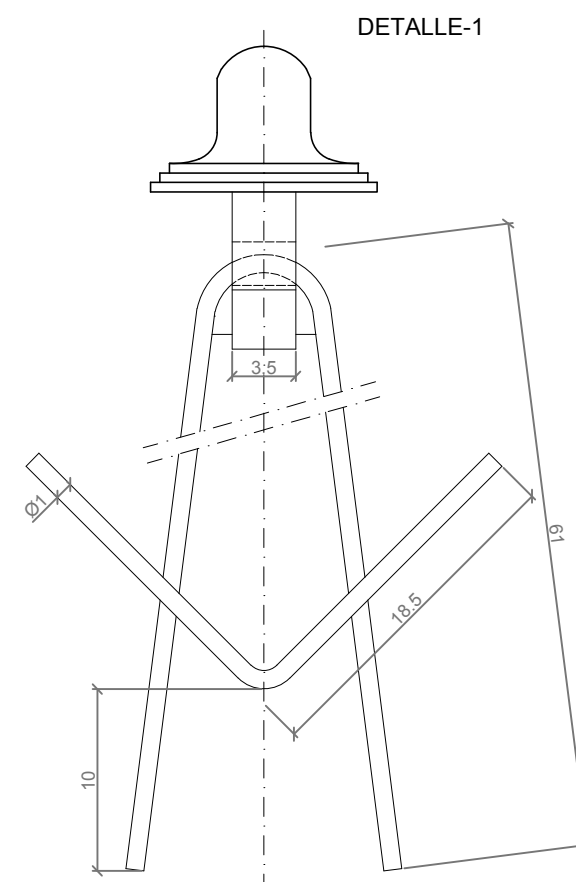


PLANTA / TOP VIEW

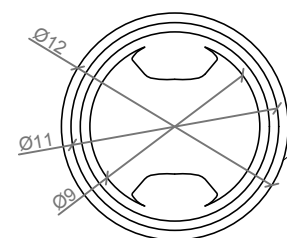
ESPECIFICACIONES / SPECIFICATIONS



ALZADO / FRONT VIEW



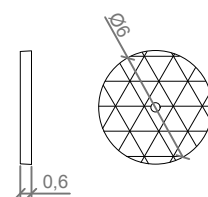
PERFIL / PROFILE VIEW



PLANTA / TOP VIEW

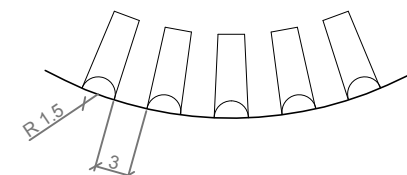
Hierro imprimación antioxidante
Iron with rust-resistant primer

DETALLE-2



Dispositivos retroreflectantes
76 / 757 / CEE
Retroreflective
76 / 757 / CEE

DETALLE-3



MANIPULACIÓN E INSTALACIÓN / HANDLING AND INSTALLATION

Elevación / Hoisting
P= 497 Kg

