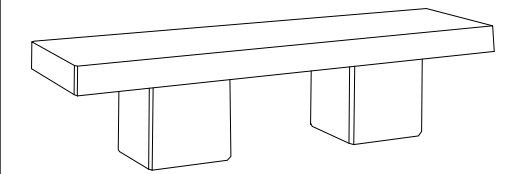
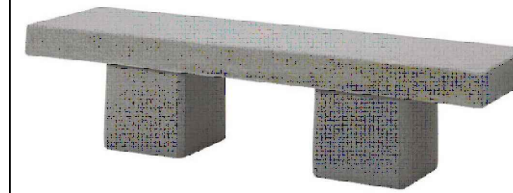


CARACTERÍSTICAS / FEATURES

Material hormigón Petra 1 + Petra 2
Acabado decapado
Dimensiones l. 190, a. 51, h. 47 cm
Color ver carta de colores
Fijación mediante resina epoxy
Peso 485 Kg
Palet 210 x 55 cm (1un)
 210 x 55 cm (2un)

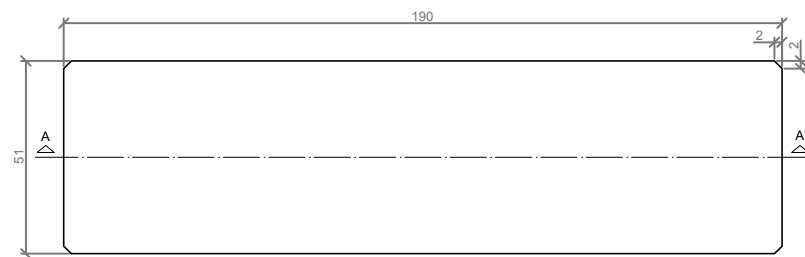
Material precast concrete Petra 1 + Petra 2
Finish scaled
Dimensions l. 190, w. 51, h. 47 cm
Colour see colour catalogue
Fixing through epoxy resin
Weight 485 Kg
Pallet 210 x 55 cm (1un)
 210 x 55 cm (2un)

diseñador / design: magourban

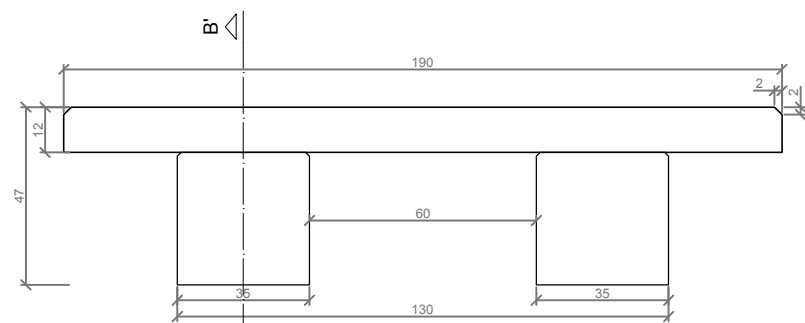


BALI

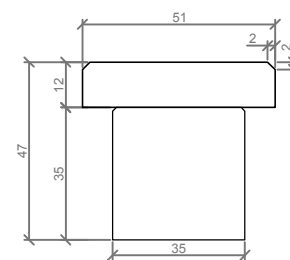
GEOMETRIA / GEOMETRY



PLANTA / TOP VIEW



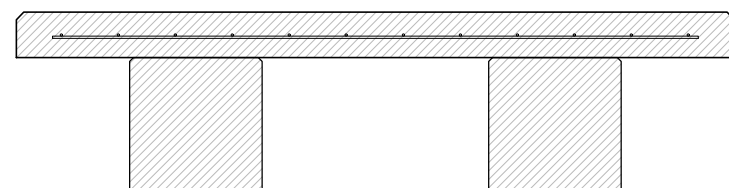
ALZADO / FRONT VIEW



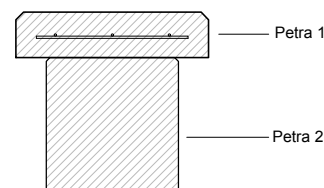
PERFIL / PROFIL VIEW

ESCALA / SCALE: 1/20

ESPECIFICACIONES / SPECIFICATIONS



SECCIÓN A-A' / SECTION A-A'



SECCIÓN B-B' / SECTION B-B'

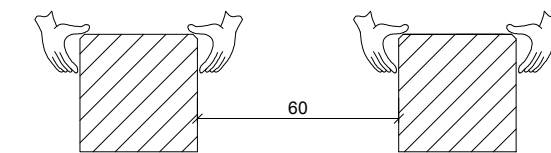
ESCALA / SCALE: 1/20

MANIPULACIÓN E INSTALACIÓN / HANDLING AND INSTALLATION

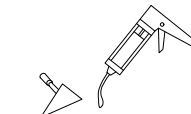
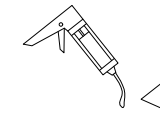
- Levantar los pies del banco y colocarlos en el lugar indicado.
 Lift the feet of the bench and place them in the indicated place.

Elevación / Elevation
 P= 100 Kg

Elevación / Elevation
 P= 100 Kg



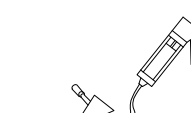
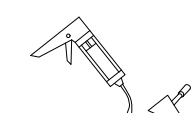
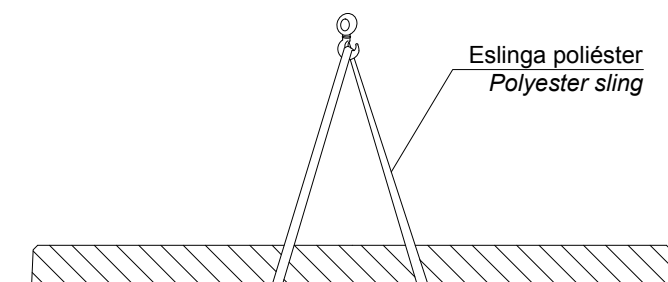
Resina Epoxy
 Epoxy resin



Resina Epoxy
 Epoxy resin

- Levantar el asiento con eslingas y apoyarlo en los pies del banco.
 Lift the seat with slings and rest it on the bench feet.

Elevación / Elevation
 P= 256 Kg



Resina Epoxy
 Epoxy resin

