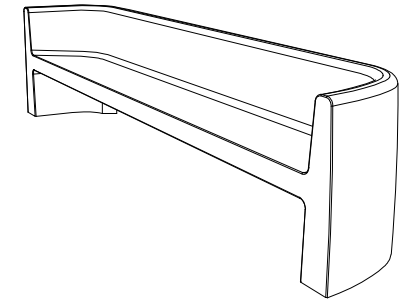


CARACTERÍSTICAS / FEATURES

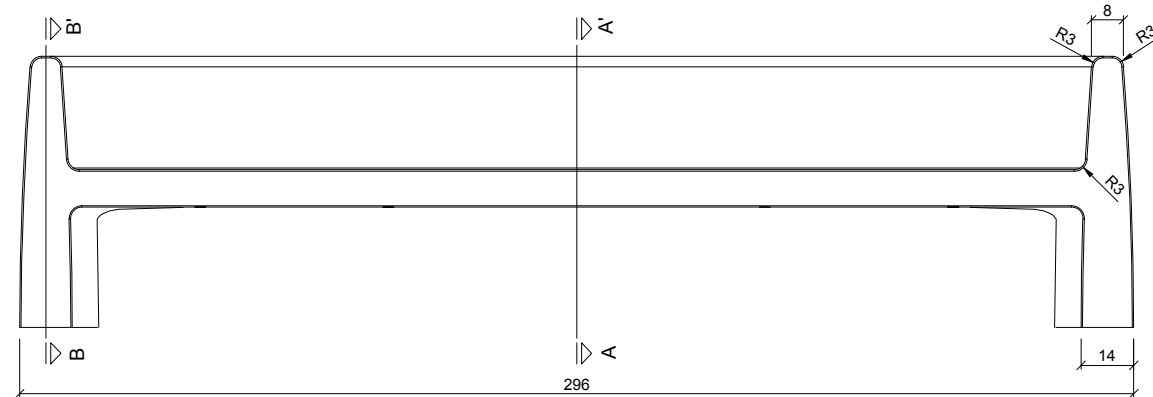
Material hormigón petra 1
Acabado decapado e hidrofugado
Dimensiones l. 296, a. 57, h. 72 cm.
Color ver carta de colores
Fijación simplemente apoyado o mediante varillas metálicas
Peso 785 Kg
Bulto 300 x 60 x 90 cm
Peso bulto 800 Kg

Material precast concrete petra 1
Finish scaled and waterproofed
Dimensions l. 296, w. 57, h. 72 cm
Colour see colour catalogue
Fixing resting on the ground or anchored with metal rod
Weight 785 Kg
Package 300 x 60 x 90 cm
Weight package 800 Kg

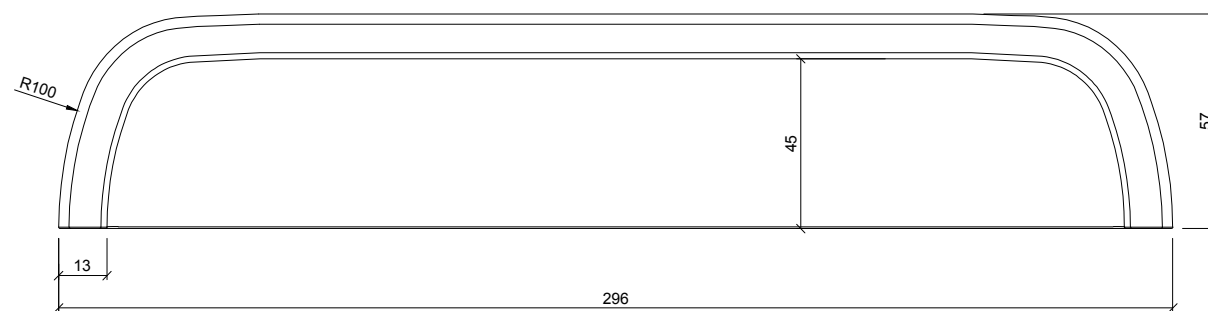
diseñador / design: Ernest Perera



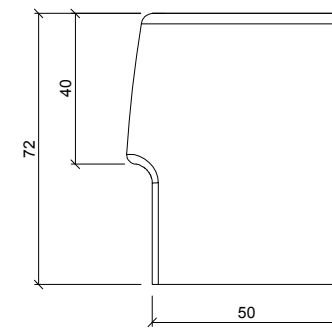
GEOMETRIA / GEOMETRY



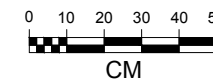
ALZADO / FRONT VIEW



PLANTA / TOP VIEW



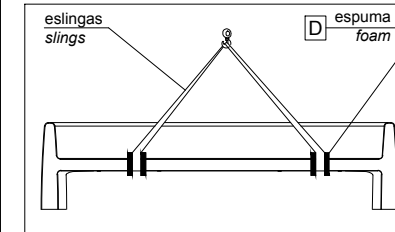
PERFIL / PROFIL VIEW



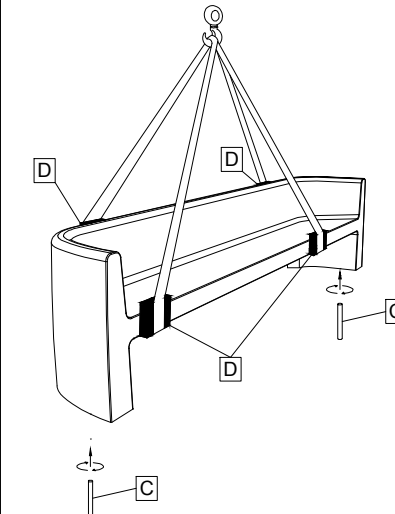
MANIPULACIÓN E INSTALACIÓN / HANDLING AND INSTALLATION

- 1 elevar y enroscar la varilla
lift and thread the rod

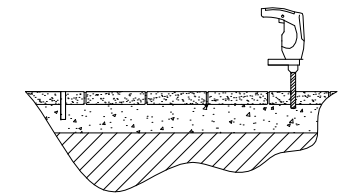
MUY IMPORTANTE / VERY IMPORTANT
 proteger las esquinas con espuma del embalaje
 protect the corners with packing foam



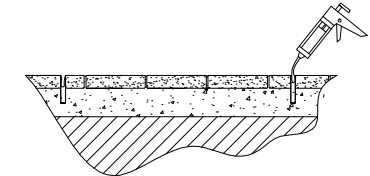
elevación / hoisting
 P= 785 Kg



- 2 perforar dos agujeros / drill 2 holes

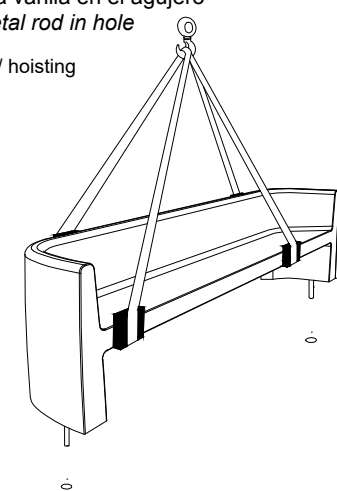


- 3 verter resina epoxy / pour resin epoxy



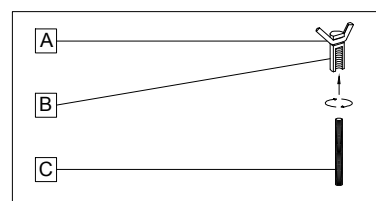
- 4 insertar la varilla en el agujero
insert metal rod in hole

elevación / hoisting
 P= 785 Kg

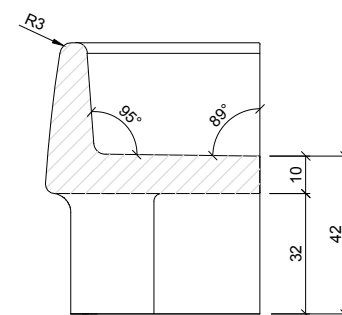


ESPECIFICACIONES / SPECIFICATIONS

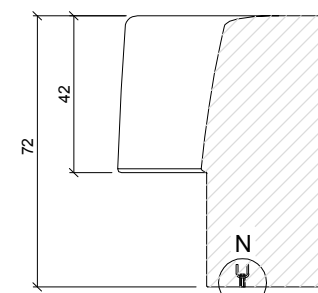
SISTEMA DE FIJACIÓN / ANCHORAGE SYSTEM



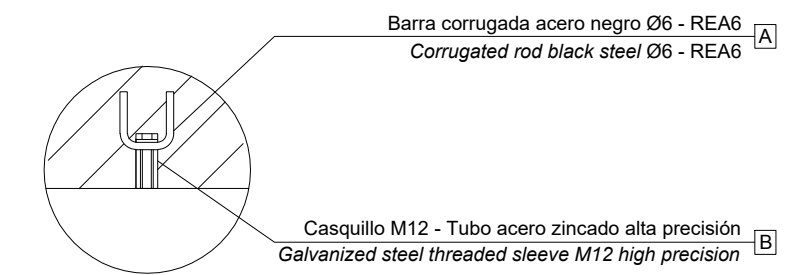
- A barra corrugada / corrugated rod
- B casquillo roscado / thread sleeve
- C varilla roscada / thread the rod
- D espuma embalaje / packing foam



SECCIÓN A-A' / SECTION A-A'



SECCIÓN B-B' / SECTION B-B'



DETALLE N / DETAIL N