

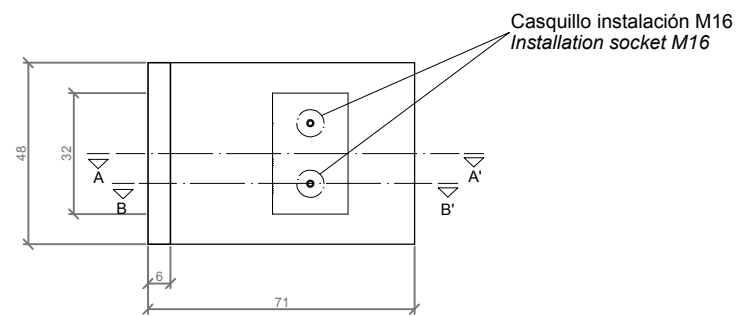
CARACTERÍSTICAS / FEATURES

Material hormigón Petra 1
Acabado decapado e hidrofugado
Dimensiones l. 71, a. 48, h. 97 cm
Color ver carta de colores
Fijación mediante varillas roscadas y resina epoxy
Peso 250 Kg
Palet 120 x 80 cm (2 unidades)

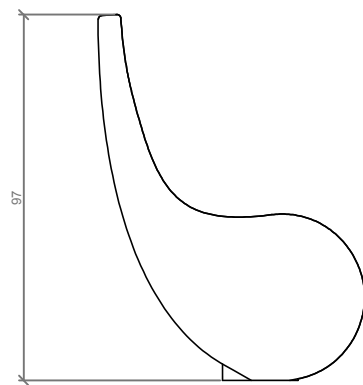
Material precast concrete Petra 1
Finish scaled and waterproofed
Dimensions l. 71, w. 48, h. 97 cm
Colour see colour catalogue
Fixing anchored with metal rod and epoxy resin
Weight 250 Kg
Pallet 120 x 80 cm (2 units)

diseñador / design: Joan Cinca

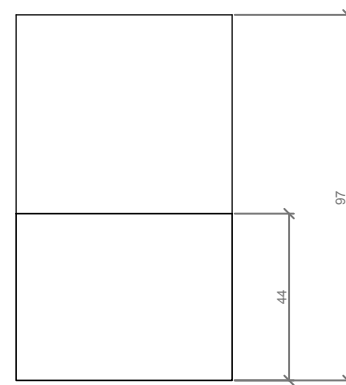
GEOMETRIA / GEOMETRY



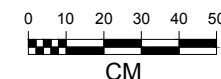
PLANTA / TOP VIEW



ALZADO / FRONT VIEW

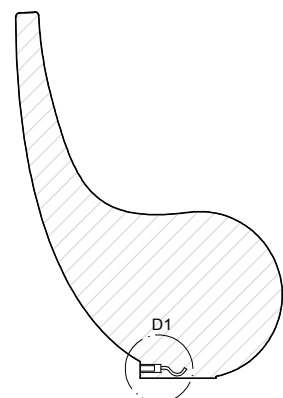


PERFIL / RIGHT SIDE



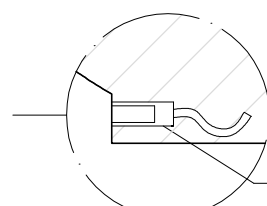
ESCALA / SCALE : 1/ 20

ESPECIFICACIONES / SPECIFICATIONS

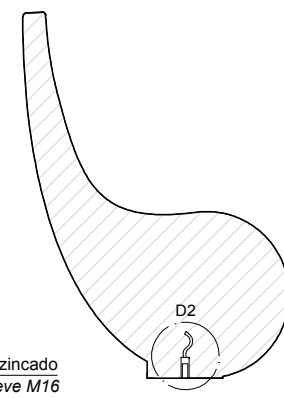


SECCIÓN A-A' / SECTION A-A'

Se usa para el transporte
 Used for transport

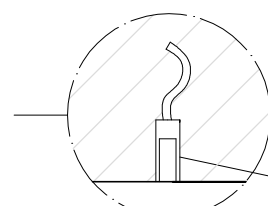


DETALLE D1 / DETAIL D1



SECCIÓN B-B' / SECTION B-B'

Se usa para la instalación
 Used for installation



DETALLE D2 / DETAIL D2

Casquillo M16 de acero zincado
 Galvanized steel threaded sleeve M16

Casquillo M16 de acero zincado
 Galvanized steel threaded sleeve M16

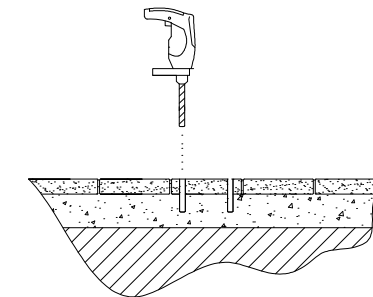
MANIPULACIÓN E INSTALACIÓN / HANDLING AND INSTALLATION

Instalación en pavimentos duros
 Installation on hard pavements

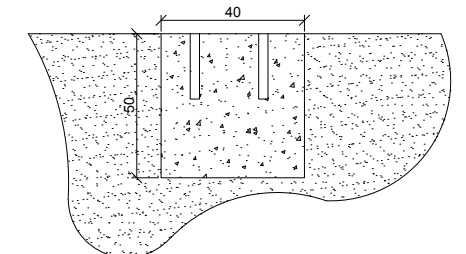
Instalación en terrenos blandos
 Installation on soft grounds



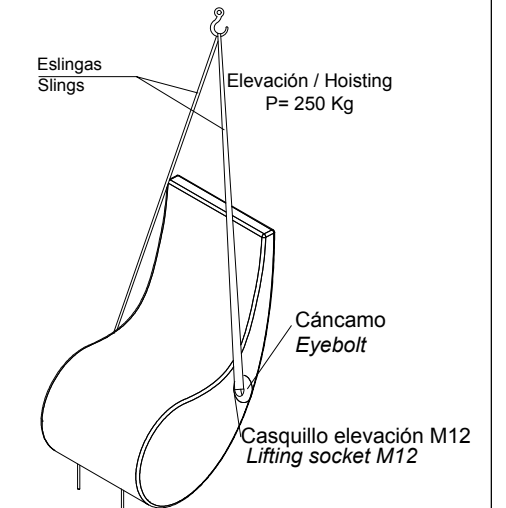
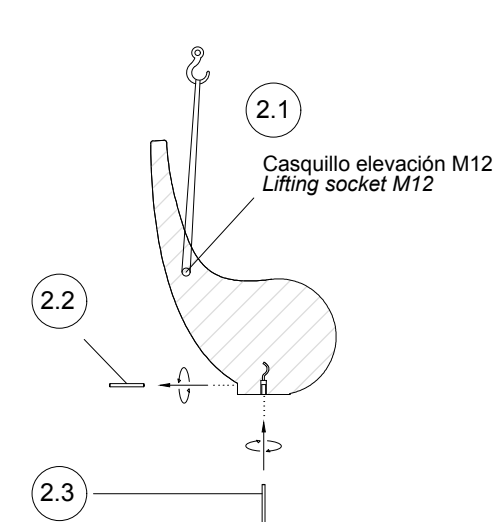
1 Perforar 2 agujeros / Drill 2 holes [Ø24 mm]



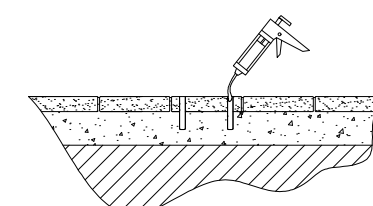
1 Construir base sólida 40x40x50h cm en el terreno con dos agujeros para las varillas de instalación
 To build a solid base 40x40x50h cm on the ground with two holes for the installation metal rods



2 2.1-Enroscar cáncamo en casquillo M12 para elevación 2.2- Extraer varillas de transporte 2.3- Enroscar varillas de instalación en la parte inferior.
 2.1-Screw eyebolt into lifting socket M12 2.2- Extract transport rods 2.3- Thread the installation rods on the sockets M16 of the bottom.



3 Verter resina epoxy en los agujeros e insertar el banco
 Pour epoxy resin in the holes and insert the bench



3 Verter resina epoxy en la base y agujeros e insertar el banco
 Pour epoxy resin on the base and in the holes and insert the bench

