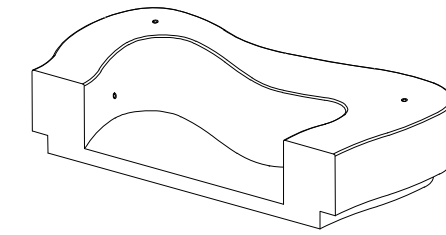


**CARACTERÍSTICAS / FEATURES**

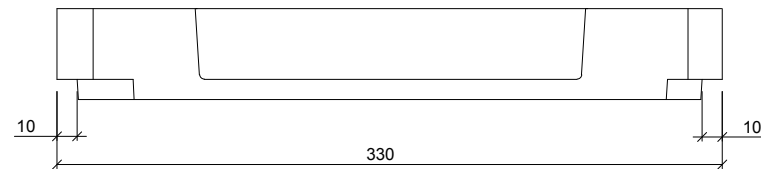
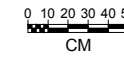
**Material** hormigón petra 1  
**Acabado** decapado e hidrofugado  
**Dimensiones** l. 330, a. 165, h. 45 cm.  
**Color** ver carta de colores  
**Fijación** simplemente apoyado o mediante resina epoxy  
**Peso / Capacidad** 3570 Kg / 709 L  
**Bulto** 330 x 165 x 60 cm  
**Peso bulto** 3590 Kg

**Material** precast concrete petra 1  
**Finish** scaled and waterproofed  
**Dimensions** l. 330, w. 165, h. 45 cm  
**Colour** see colour catalogue  
**Fixing** resting on the ground or anchored with epoxy resin  
**Weight / Capacity** 3570 Kg / 709 L  
**Package** 330 x 165 x 60 cm  
**Weight package** 3590 Kg

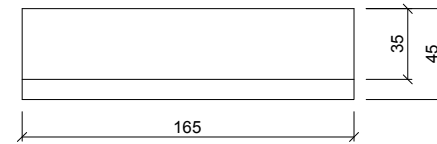
diseñador / design: Roger Albero



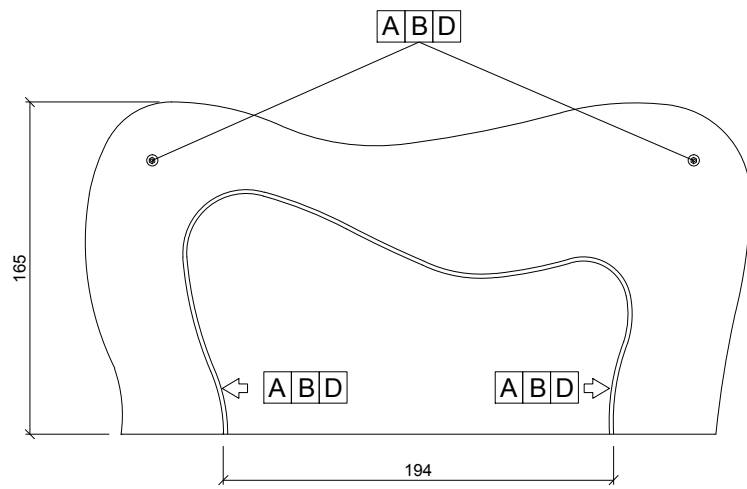
**GEOMETRIA / GEOMETRY**



ALZADO / FRONT VIEW



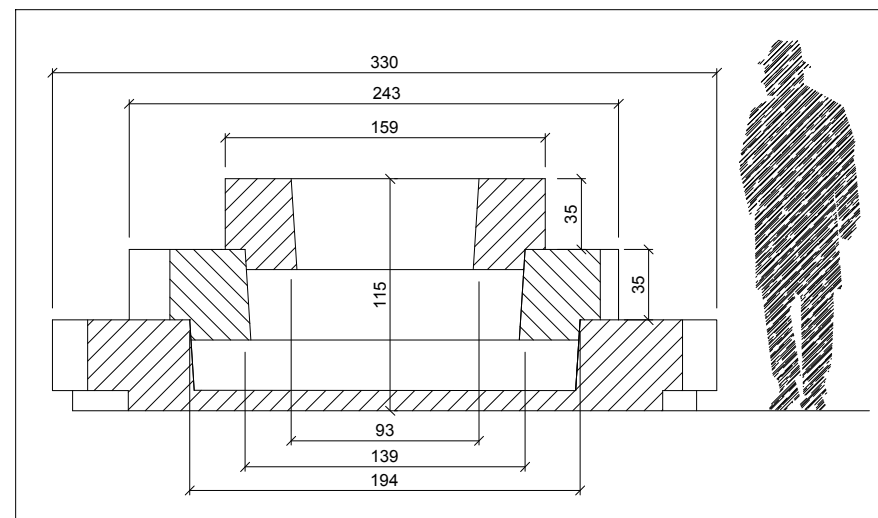
PERFIL / PROFIL VIEW



PLANTA / TOP VIEW

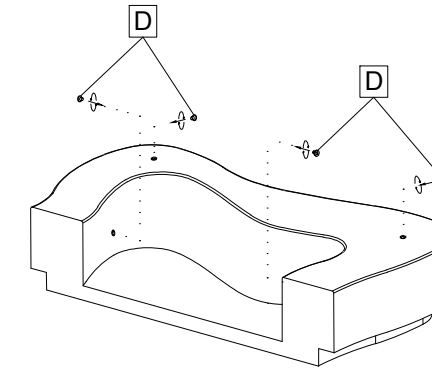
↑ ubicación del casquillo roscado  
 location of steel socket threaded

SECCIÓN CONJUNTO CRÚSOE / SECTION SET OF CRÚSOE

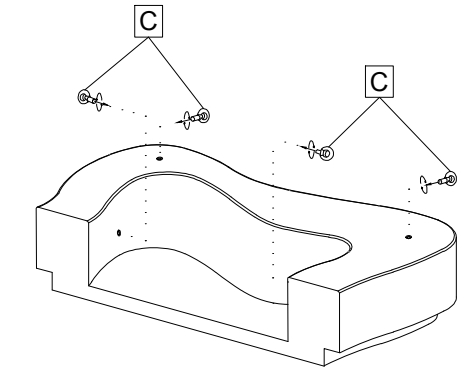


**MANIPULACIÓN E INSTALACIÓN / HANDLING AND INSTALLATION**

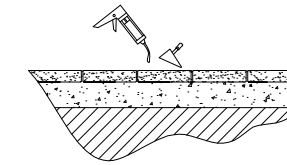
1 extraer tapa / extract stopper



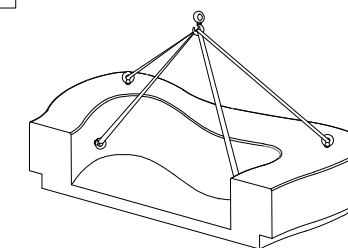
2 enroscar cáncamo / thread the eyebolt



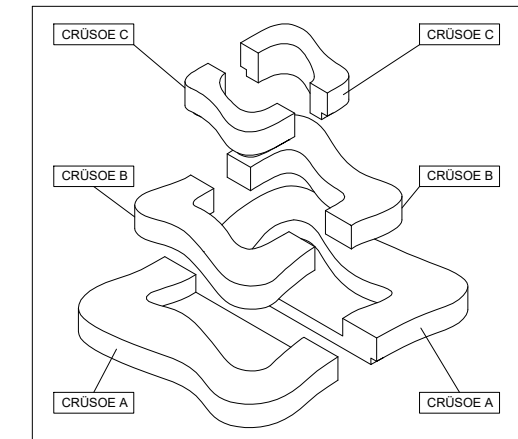
3 verter resina epoxy / pour resin epoxy



4 elevar e instalar / lift and install

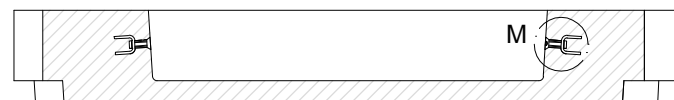


CONJUNTO CRÚSOE / SET OF CRÚSOE



se suministra instrucciones de montaje para el conjunto crúsoe  
 instructions assembly are supplied for montage set of Crusoe

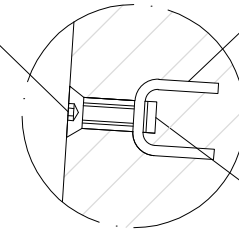
**ESPECIFICACIONES / SPECIFICATIONS**



SECCIÓN / SECTION

D Tornillo avellanado M16  
 Countersunk screw M16

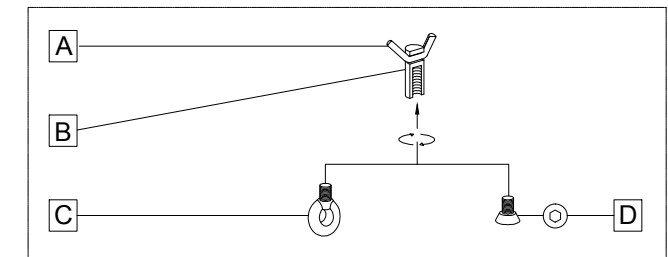
A Barra corrugada acero negro Ø10  
 Corrugated rod black steel Ø10



B Casquillo M16 - Tubo acero zincado alta precisión  
 Galvanized steel threaded sleeve M16 high precision

DETALLE M / DETAIL M

**SISTEMA DE ELEVACIÓN / LIFTING SYSTEM**



A barra corrugada / corrugated rod C cáncamo / eyebolt  
 B casquillo roscado / thread sleeve D tapa / stopper