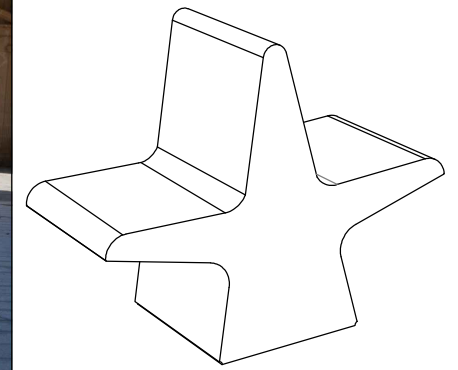


**CARACTERISTICAS / FEATURES**

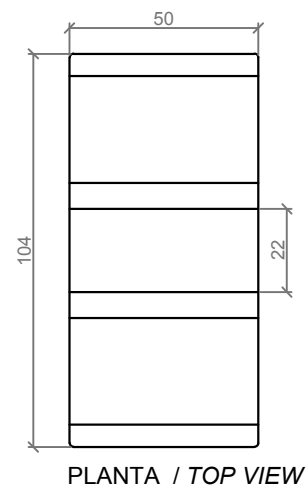
**Material** hormigón Petra 1  
**Acabado** decapado e hidrofugado  
**Dimensiones** l. 104, a. 50, h. 84 cm  
**Color** ver carta de colores  
**Fijación** simplemente apoyado o mediante resina epoxi  
**Peso** 340 Kg  
**Palet** 120 x 100 x 100h cm (2 unidades)  
**Peso palet** 700 Kg

**Material** precast concrete Petra 1  
**Finish** scaled and waterproofed  
**Dimensions** l.104, w.50, h. 84 cm  
**Colour** see colour catalogue  
**Fixing** resting on the ground or with epoxy resin  
**Weight** 340 Kg  
**Pallet** 120 x 100 x 100h cm (2 units)  
**Weight pallet** 700 Kg

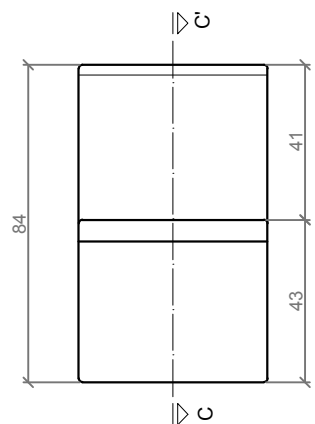
diseñador / design: *Hesús Alfaro, Ana Hurtado*



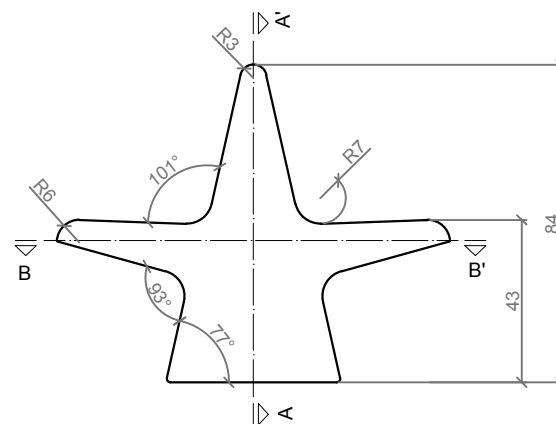
**GEOMETRIA / GEOMETRY**



PLANTA / TOP VIEW



ALZADO / FRONT SIDE

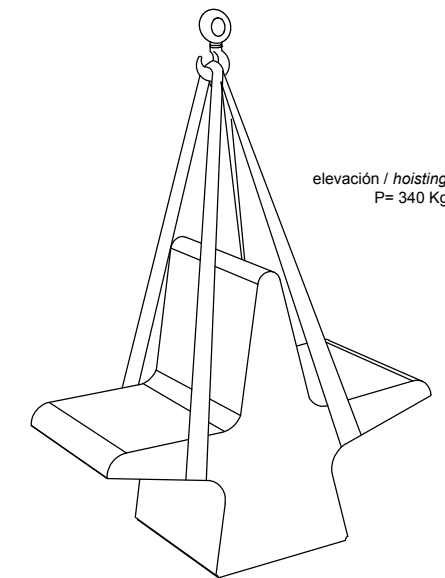


PERFIL / RIGHT SIDE

ESCALA / SCALE : 1/ 20

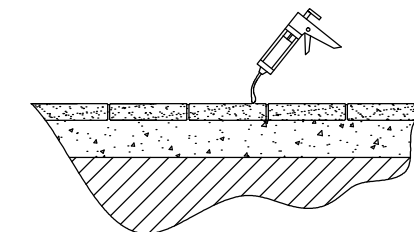
**MANIPULACIÓN E INSTALACIÓN / HANDLING AND INSTALLATION**

1 Elevar mediante eslingas de poliéster / Lift by polyester slings

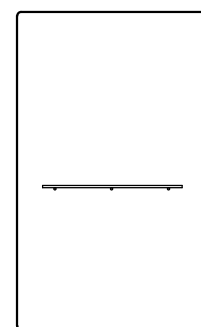


elevación / hoisting  
P= 340 Kg

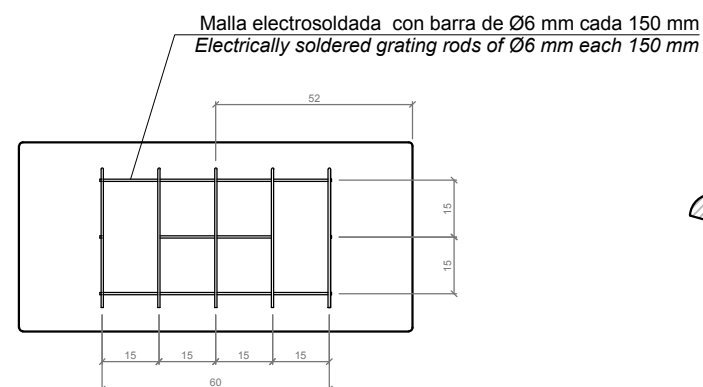
2 Verter resina epoxy en el pavimento e instalar el banco / Pour epoxy resin on the pavement and install the bench



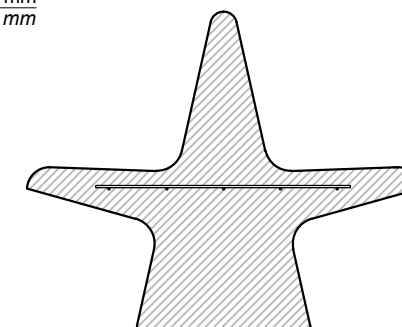
**ESPECIFICACIONES / SPECIFICATIONS**



SECCIÓN / SECTION: A-A'



SECCIÓN / SECTION: B-B'



SECCIÓN / SECTION: C-C'

ESCALA / SCALE : 1/ 20