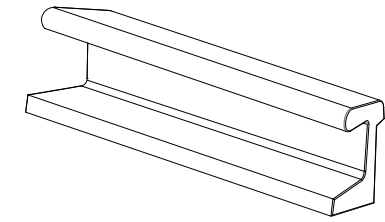


CARACTERISTICAS / FEATURES

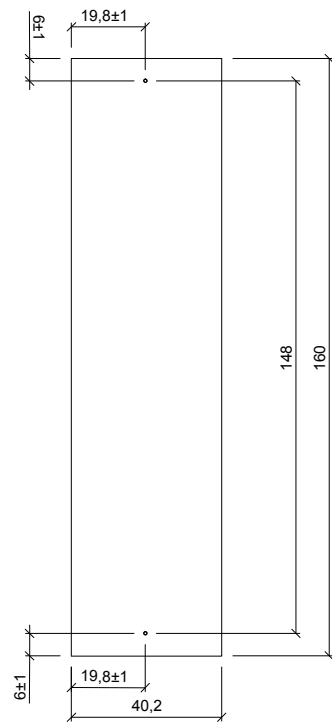
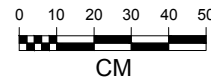
Material hormigón petra 1
Acabado decapado e hidrofugado
Dimensiones l. 160, a.40.2, h. 49.6 cm.
Color ver carta de colores
Fijación simplemente apoyado o mediante varillas metálicas
Peso 400 Kg
Palet 200 x 80.4 x 65 cm
Peso palet 430 Kg

Material concrete petra 1
Finish scaled and waterproofed
Dimensions l. 160, w. 40.2, h. 49.6 cm
Colour see colour catalogue
Fixing resting on the ground or anchored with metal rod
Weight 400 Kg
Pallet 200 x 80.4 x 65 cm
Weight pallet 430 Kg

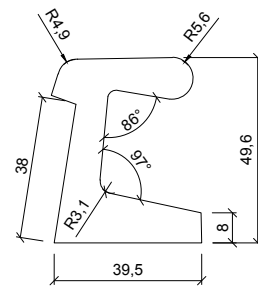
diseñador / design: EMBT, Benedetta Tagliabue



GEOMETRIA / GEOMETRY

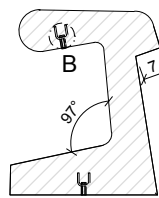


VISTA INFERIOR / BOTTOM VIEW

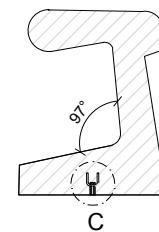


ALZADO / FRONT VIEW

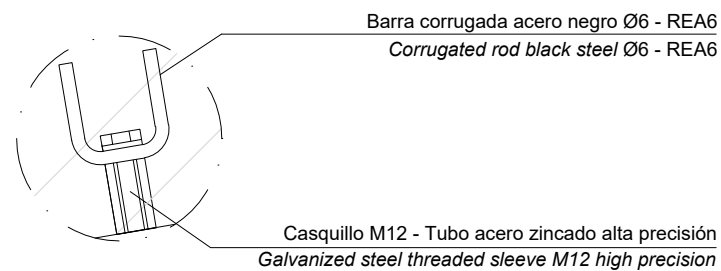
ESPECIFICACIONES / SPECIFICATIONS



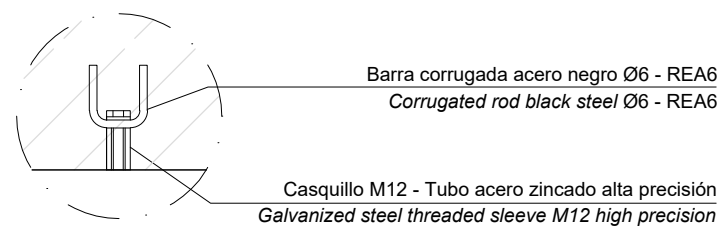
SECCIÓN 1 / SECTION 1



SECCIÓN 2 / SECTION 2



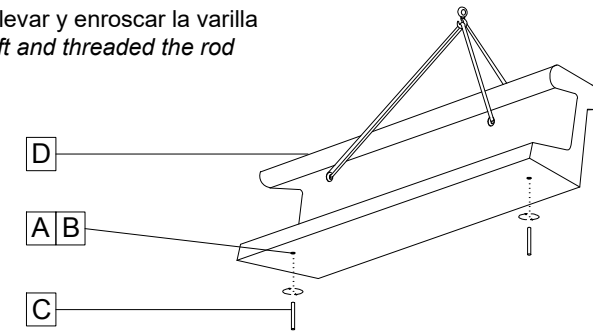
DETALLE B / DETAIL B
[ELEVACIÓN / HOISTING]



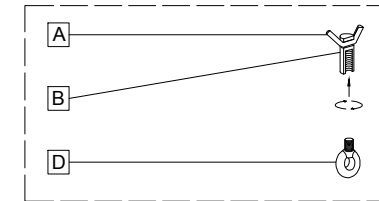
DETALLE C / DETAIL C
[ANCLAJE / ANCHORAGE]

MANIPULACIÓN E INSTALACIÓN / HANDLING AND INSTALLATION

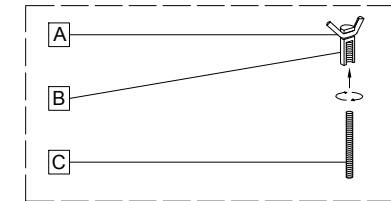
- 1 enroskar cáncamo elevar y enroskar la varilla
thread the eyebolt, lift and threaded the rod
elevación / hoisting
P= 400 Kg



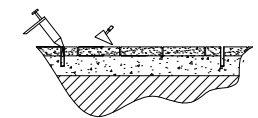
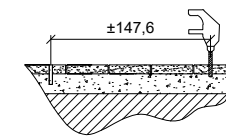
SISTEMA DE ELEVACIÓN / ANCHORAGE SYSTEM



SISTEMA DE FIJACIÓN / LIFTING SYSTEM



- 2 perforar 2 agujeros a distancia ± 147,6cm
drill 2 holes each at a distance ± 147,6cm
- 3 verter resina epoxy / pour resin epoxy



- 4 insertar la varilla en el agujero
insert metal rod in hole

