

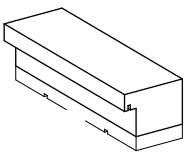
Design: Mark Nagy-Mihaly, Rozalia Juhasz

Year: 2019

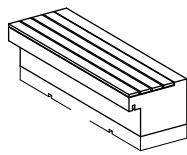


ELEMENTS

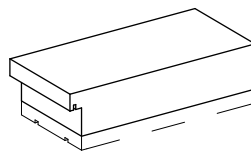
MIL-S



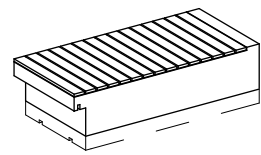
MIL-S-F



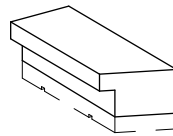
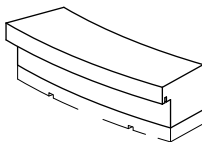
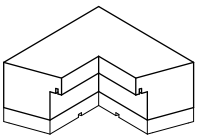
MIL-W



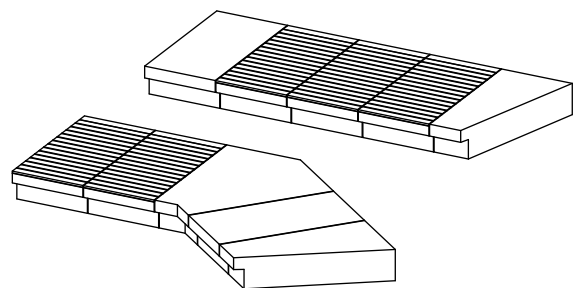
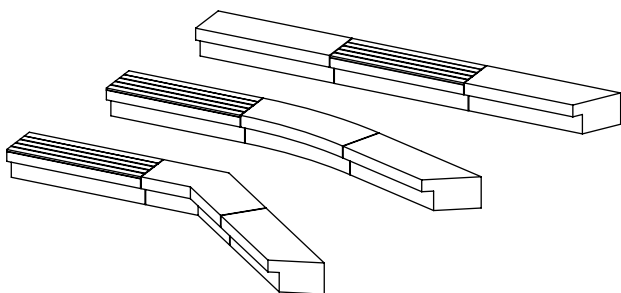
MIL-W-F



MIL-E



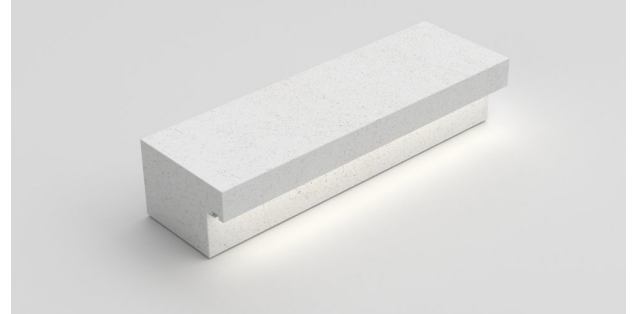
SAMPLE COMBINATIONS



Design: Mark Nagy-Mihaly, Rozalia Juhasz
 Year: 2019

INFO

Material:	high performance concrete (HPC)
Standard colour:	white
Finish:	natural cast
Treatment:	impregnated
Lighting:	IP 65 protected LED light
Lifting:	with lifting straps
Placement:	on concrete foundation
Fixing:	with antifreeze adhesive/ by anchoring
Cleaning:	with neutral detergent



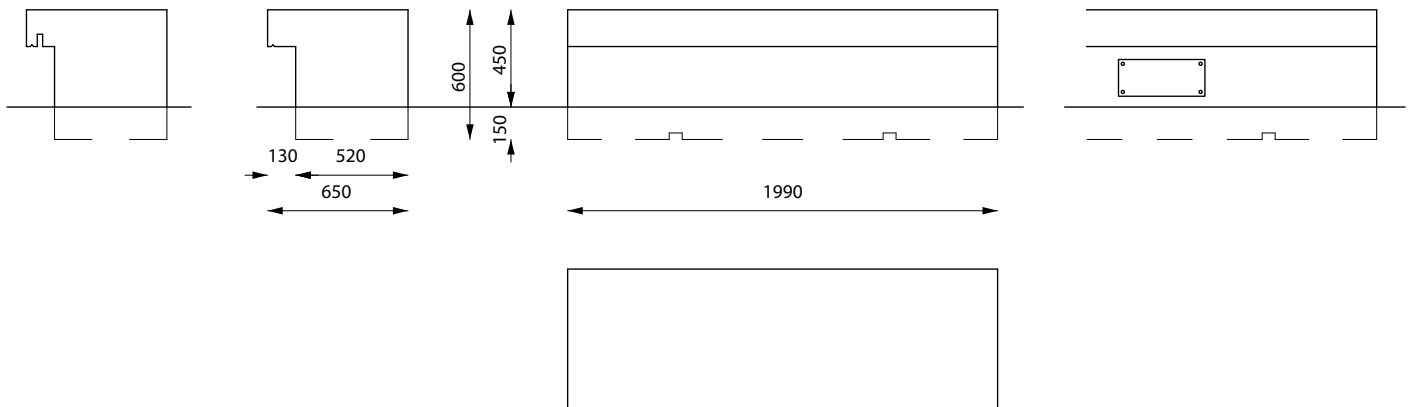
MEASUREMENTS

0 500 mm

MIL-S-LED
 / with LED lighting
 780 kg

MIL-S
 780 kg

MIL-S-LED-B
 / with inspection open
 780 kg



INSTALLATION

The product may be lifted with lifting straps. The product is fixed with antifreeze adhesive or with anchor bolts to concrete foundation.

For further information see Installation Guide.

MAINTENANCE

The product may be cleaned with neutral detergent. For further information see Maintenance Guide.

Design: Mark Nagy-Mihaly, Rozalia Juhasz
 Year: 2019

INFO

Material:	high performance concrete (HPC)
Standard colour:	white
Finish:	natural cast
Treatment:	impregnated
Seat:	varnished ash/ oiled ash
Lighting:	IP 65 protected LED light
Lifting:	with lifting straps
Placement:	on concrete foundation
Fixing:	with antifreeze adhesive/ by anchoring
Cleaning:	with neutral detergent



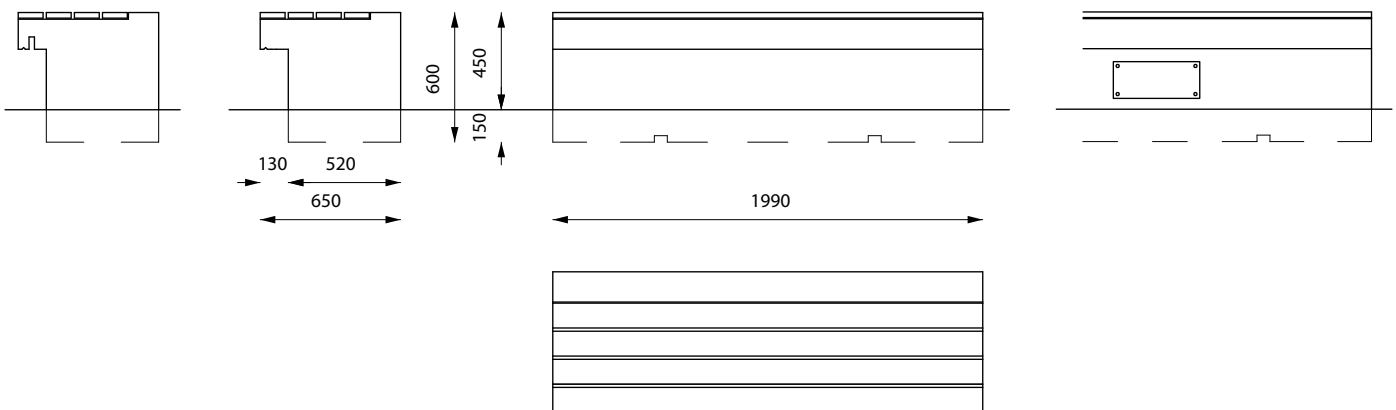
MEASUREMENTS

0 500 mm

MIL-S-F-LED
 / with LED lighting
 780 kg

MIL-S-F
 780 kg

MIL-S-F-LED-B
 / with inspection open
 780 kg



INSTALLATION

The product may be lifted with lifting straps. The product is fixed with antifreeze adhesive or with anchor bolts to concrete foundation.

For further information see Installation Guide.

MAINTENANCE

The product may be cleaned with neutral detergent. For further information see Maintenance Guide.

Design: Mark Nagy-Mihaly, Rozalia Juhasz
 Year: 2019

INFO

Material:	high performance concrete (HPC)
Standard colour:	white
Finish:	natural cast
Treatment:	impregnated
Lighting:	IP 65 protected LED light
Lifting:	with lifting straps
Placement:	on concrete foundation
Fixing:	with antifreeze adhesive/ by anchoring
Cleaning:	with neutral detergent



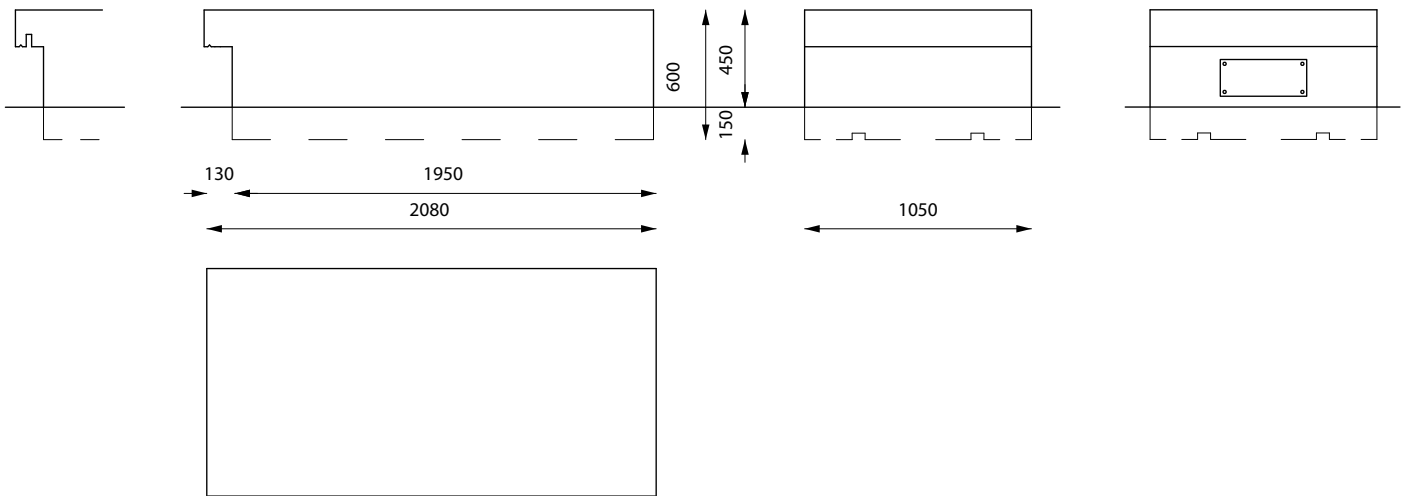
MEASUREMENTS

0 500 mm

MIL-W-LED
 / with LED lighting
 1000 kg

MIL-W
 1000 kg

MIL-W-LED-B
 / with inspection open
 1000 kg



INSTALLATION

The product may be lifted with lifting straps. The product is fixed with antifreeze adhesive or with anchor bolts to concrete foundation.

For further information see Installation Guide.

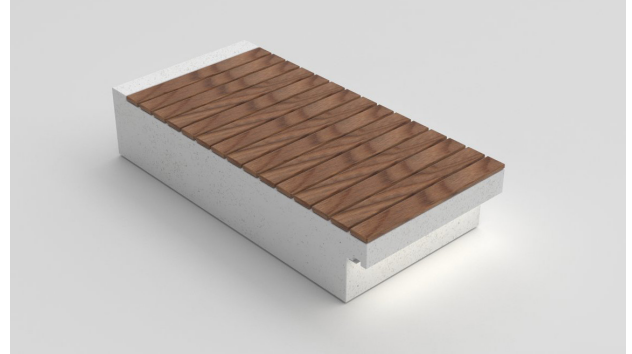
MAINTENANCE

The product may be cleaned with neutral detergent. For further information see Maintenance Guide.

Design: Mark Nagy-Mihaly, Rozalia Juhasz
 Year: 2019

INFO

Material:	high performance concrete (HPC)
Standard colour:	white
Finish:	natural cast
Treatment:	impregnated
Seat:	varnished ash/ oiled ash
Lighting:	IP 65 protected LED light
Lifting:	with lifting straps
Placement:	on concrete foundation
Fixing:	with antifreeze adhesive/ by anchoring
Cleaning:	with neutral detergent



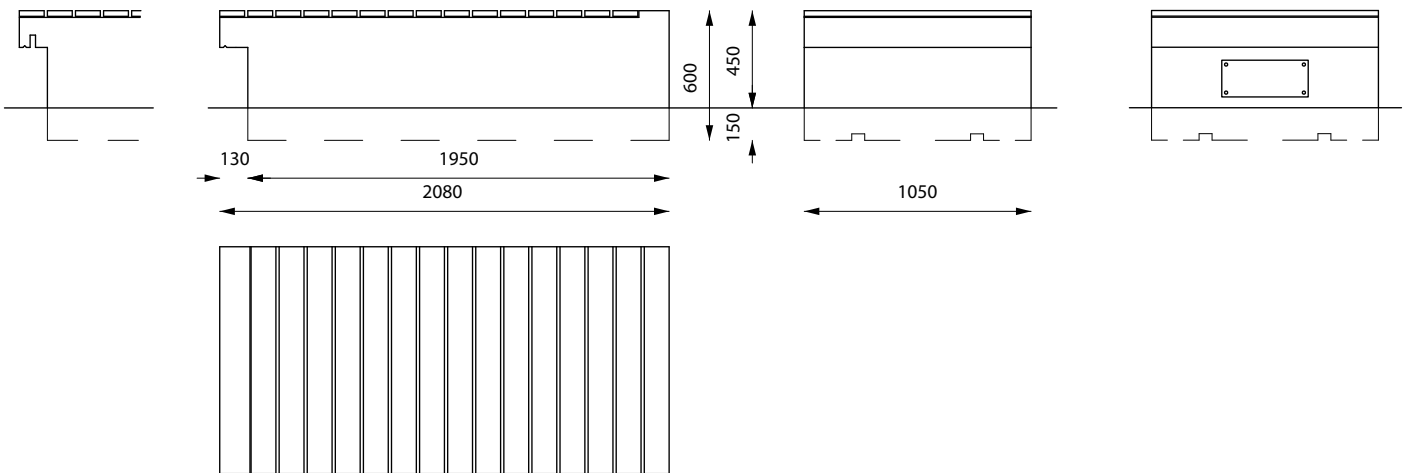
MEASUREMENTS

0 500 mm

MIL-W-F-LED
 / with LED
 lighting
 1000 kg

MIL-W-F
 1000 kg

MIL-W-F-LED-B
 / with inspection open
 1000 kg



INSTALLATION

The product may be lifted with lifting straps. The product is fixed with antifreeze adhesive or with anchor bolts to concrete foundation.

For further information see Installation Guide.

MAINTENANCE

The product may be cleaned with neutral detergent.

For further information see Maintenance Guide.

Design: Mark Nagy-Mihaly, Rozalia Juhasz

Year: 2019

INFO

Material:	high performance concrete (HPC)
Standard colour:	white
Finish:	natural cast
Treatment:	impregnated
Lighting:	IP 65 protected LED light
Lifting:	with lifting straps
Placement:	on concrete foundation
Fixing:	with antifreeze adhesive/ by anchoring
Cleaning:	with neutral detergent

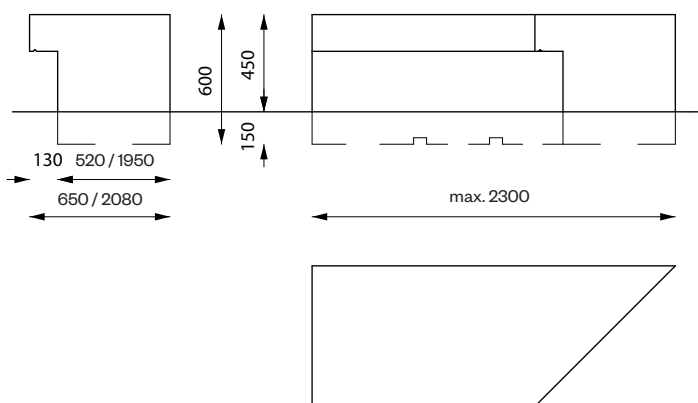
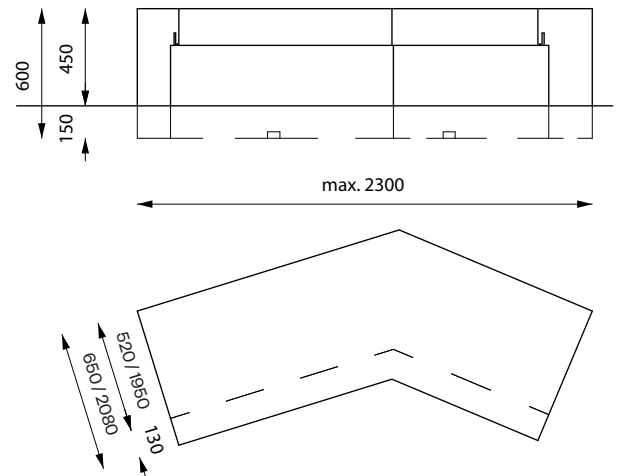
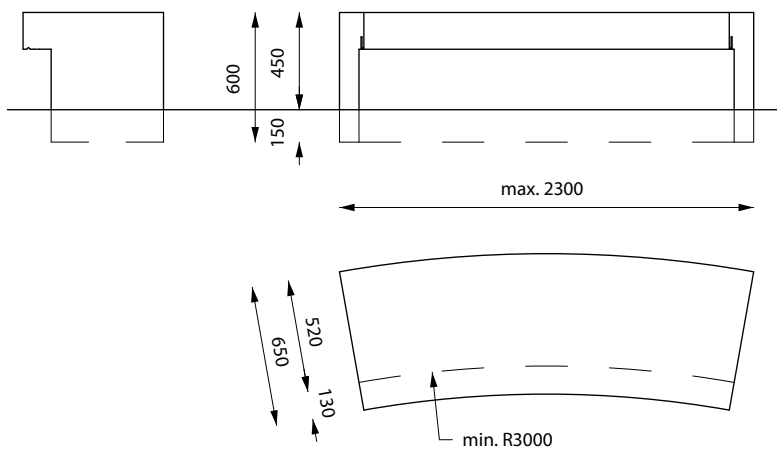


MEASUREMENTS

0 500mm

MIL-E

max. 1000 kg



INSTALLATION

The product may be lifted with lifting straps. The product is fixed with antifreeze adhesive or with anchor bolts to concrete foundation.

For further information see Installation Guide.

MAINTENANCE

The product may be cleaned with neutral detergent.

For further information see Maintenance Guide.